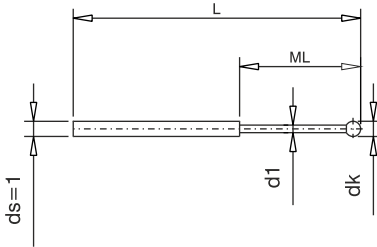
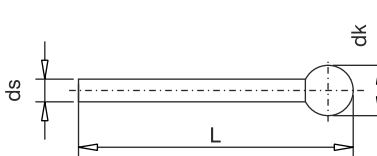


# GEAR STYLI

Unthread Styli	Order No.	Shaft	Ball	wt	dk mm	d1 mm	L mm	ML mm
Styli (Type F)	0.13-15.1-1 NTF	TC	TC	0.2g	0.13	0.08	15.1	1.0
	0.2-15.2-1 NTF	TC	Ruby	0.2g	0.2	0.15	15.2	1.5
	0.25-15.3-1 NTF	TC	Ruby	0.2g	0.25	0.2	15.3	2.5
	0.3-15.3-1 NTF	TC	Ruby	0.2g	0.3	0.2	15.3	2.5
	0.4-15.4-1 NTF	TC	Ruby	0.2g	0.4	0.3	15.4	2.5
	0.5-15.5-1 NTF	TC	Ruby	0.2g	0.5	0.3	15.5	2.5
	0.6-15.6-1 NTF	TC	Ruby	0.3g	0.6	0.4	15.6	4.5
	0.7-15.7-1 NTF	TC	Ruby	0.3g	0.7	0.4	15.7	4.5
	0.8-15.8-1 NTF	TC	Ruby	0.3g	0.8	0.6	15.8	4.5
	0.9-15.9-1 NTF	TC	Ruby	0.3g	0.9	0.6	15.9	4.5
	1.0-16-1 NTF	TC	Ruby	0.4g	1.0	0.8	16.0	4.5



Styli (Type N)	Order No.	Shaft	Ball	wt	dk mm	ds mm	L mm
Styli (Type N)	1.35-26.4-1 NTN	TC	Ruby	0.3g	1.35	1.0	26.4
	1.5-26.5-1 NTN	TC	Ruby	0.3g	1.5	1.0	26.5
	2.0-26-1 NTN	TC	Ruby	0.3g	2.0	1.0	26.0
	2.0-27-1.5 NTN	TC	Ruby	0.6g	2.0	1.5	27.0
	2.0-45-1 NTN	TC	Ruby	0.5g	2.0	1.0	45.0
	2.0-61-1 NTN	TC	Ruby	0.7g	2.0	1.0	61.0
	2.0-81-1 NTN	TC	Ruby	1.0g	2.0	1.0	81.0
	2.0-101-1 NTN	TC	Ruby	1.3g	2.0	1.0	101.0
	2.5-27.5-1.5 NTN	TC	Ruby	0.6g	2.5	1.5	27.5
	3.0-26.5-1.5 NTN	TC	Ruby	0.7g	3.0	1.5	26.5
	3.0-38-2 NTN	TC	Ruby	2.0g	3.0	2.0	38.0
	3.0-45-1.5 NTN	TC	Ruby	1.0g	3.0	1.5	45.0
	3.0-61.5-1.5 NTN	TC	Ruby	1.6g	3.0	1.5	61.5
	3.0-81.5-1.5 NTN	TC	Ruby	2.2g	3.0	1.5	81.5
	3.0-101.5-1.5 NTN	TC	Ruby	2.8g	3.0	1.5	101.5
	4.0-27-2 NTN	TC	Ruby	1.3g	4.0	2.0	27.0
	4.0-45-2 NTN	TC	Ruby	2.1g	4.0	2.0	45.0
	4.0-62-2 NTN	TC	Ruby	2.9g	4.0	2.0	62.0
	4.0-82-2 NTN	TC	Ruby	3.9g	4.0	2.0	82.0
	4.0-102-2 NTN	TC	Ruby	4.9g	4.0	2.0	102.0
	5.0-27.5-2 NTN	TC	Ruby	1.4g	5.0	2.0	27.5
	5.0-42.5-2 NTN	TC	Ruby	2.3g	5.0	2.0	42.5
	5.0-62.5-2 NTN	TC	Ruby	3.1g	5.0	2.0	62.5
	5.0-82.5-2 NTN	TC	Ruby	4.0g	5.0	2.0	82.5
	5.0-102.5-2 NTN	TC	Ruby	5.0g	5.0	2.0	102.5
	6.0-28-2 NTN	TC	Ruby	1.6g	6.0	2.0	28.0
	6.0-43-2 NTN	TC	Ruby	2.2g	6.0	2.0	43.0
	6.0-63-2 NTN	TC	Ruby	3.2g	6.0	2.0	63.0
	6.0-83-2 NTN	TC	Ruby	4.2g	6.0	2.0	83.0
	6.0-103-2 NTN	TC	Ruby	4.9g	6.0	2.0	103.0
	8.0-29-2 NTN	TC	Ruby	2.0g	8.0	2.0	29.0
	8.0-64-2 NTN	TC	Ruby	3.6g	8.0	2.0	64.0
	8.0-84-2 NTN	TC	Ruby	4.5g	8.0	2.0	84.0

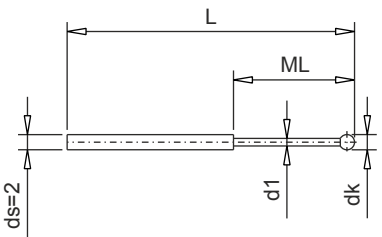


All the above for use with **Adaptors for styli** (Page 15, 28, 37).

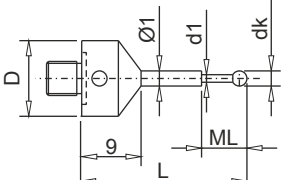
TC = Tungsten Carbide

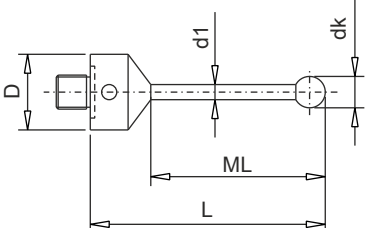
INDO SERVICES

TEL : 080 23406723, Fax : 080 23111346, E-mail : info@indoservices.net

Unthread Styli	Order No.	Leitz No.	wt	dk mm	d1 mm	L mm	ML mm
<b>Styli (Type F)</b>  Ball: Ruby Shaft: Tungsten carbide  	0.3-15.3-2 NTF	M40-021.810-001	0.5g	0.3	0.2	15.3	2.5
	0.5-15.5-2 NTF	M40-021.810-002	0.5g	0.5	0.3	15.5	2.5
	0.5-22.3-2 NTF	-	0.6g	0.5	0.3	22.3	4.3
	0.6-15.6-2 NTF	M40-021.810-003	0.5g	0.6	0.4	15.6	4.5
	0.8-15.8-2 NTF	M40-021.810-004	0.5g	0.8	0.6	15.8	4.5
	0.8-22.4-2 NTF		0.6g	0.8	0.6	22.4	4.4
	1.0-16-2 NTF	M40-021.810-005	0.5g	1.0	0.8	16.0	4.5
	1.0-22.5-2 NTF	M00-694.062-005	0.6g	1.0	0.8	22.5	4.5
	* 1.0-34.2-2 NTF	060-694.151-007	0.6g	1.0	0.8	34.2	14.2
	* 1.0-34.5-2 NTF	060-694.151-009	0.6g	1.0	0.8	34.5	14.5
	1.5-22.7-2 NTF	060-694.066-000	0.7g	1.5	1.2	22.7	10.3
	1.8-46.9-2 NTF	060-694.151-005	1.8g	1.8	1.5	46.9	40.9
	2.0-23-2 NTF	060-694.065-000	0.8g	2.0	1.5	23.0	10.6
	* 4.0-34.5-2 NTF	060-694.151-006	1.2g	4.0	2.0	34.5	34.5

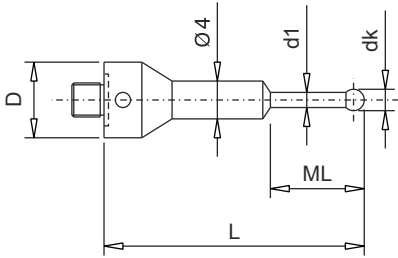
\* Tungsten Carbide flattened ball  
 For use with adaptor for styli (page 53).

M5 Thread Styli	Order No.	Zeiss No.	wt	D mm	dk mm	d1 mm	L mm	ML mm
<b>Styli (Type S)</b>  Ball: Ruby Shaft: Tungsten Carbide Ferrule: Steel  	0.2-21.8-11 NTS	-	6g	11	0.2	0.15	21.8	1.5
	0.25-21.8-11 NTS	-	6g	11	0.25	0.2	21.8	2.5
	0.3-21.8-11 NTS	-	6g	11	0.3	0.2	21.8	2.5
	0.4-21.9-11 NTS	-	6g	11	0.4	0.3	21.9	2.5
	0.5-22.0-11 NTS	-	6g	11	0.5	0.3	22.0	2.5
	0.6-22.1-11 NTS	-	6g	11	0.6	0.4	22.1	4.5
	0.7-22.2-11 NTS	-	6g	11	0.7	0.4	22.2	4.5
	0.8-22.3-11 NTS	-	6g	11	0.8	0.6	22.3	4.5
	0.9-22.4-11 NTS	-	6g	11	0.9	0.6	22.4	4.5
	1.0-22.5-11 NTS	-	6g	11	1.0	0.8	22.5	4.5

Styli (Type S)	Order No.	Zeiss No.	wt	D mm	dk mm	d1 mm	L mm	ML mm
Ball: Ruby Shaft: Tungsten Carbide Ferrule: Steel  	1.35-32.9-11 NTS	-	6g	11	1.35	1.0	32.9	23.9
	1.5-33-11 NTS	-	6g	11	1.5	1.0	33.0	24.0
	2.0-33.5-11 NTS	-	7g	11	2.0	1.5	33.5	24.5
	2.5-34-11 NTS	-	7g	11	2.5	1.5	34.0	25.0
	3.0-34.5-18 NTS	-	8g	18	3.0	2.0	34.5	16.5
	5.0-43.5-18 NTS	-	11g	18	5.0	3.5	43.5	25.5

**M5 Thread Styli**  
**Styli**

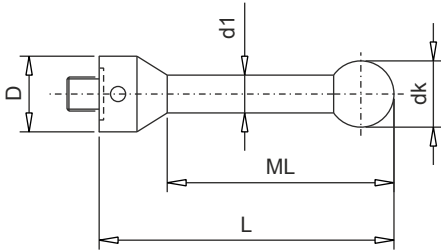
Ball: Ruby  
Shaft: Tungsten Carbide  
Ferrule: Steel



Order No.	Zeiss No.	wt	D mm	dk mm	d1 mm	L mm	ML mm
0.2-32-11 NTB	-	7g	11	0.2	0.15	32.0	1.5
0.25-32-11 NTB	-	7g	11	0.25	0.2	32.0	2.5
0.3-32-11 NTB	-	7g	11	0.3	0.2	32.0	2.5
0.4-32-11 NTB	-	7g	11	0.4	0.3	32.0	2.5
0.5-32-11 NTB	-	7g	11	0.5	0.3	32.0	2.5
0.6-32-11 NTB	-	7g	11	0.6	0.4	32.0	4.5
0.7-32-11 NTB	-	7g	11	0.7	0.4	32.0	4.5
0.8-32-11 NTB	602030-8060	7g	11	0.8	0.6	32.0	12.0
0.9-32-11 NTB	-	7g	11	0.9	0.6	32.0	12.0
1.0-32-11 NTB	602030-8061	7g	11	1.0	0.8	32.0	12.0
1.35-32-11 NTB	602030-8062	7g	11	1.35	1.0	32.0	12.0
1.35-44-11 NTB	602030-8063	7g	11	1.35	1.0	44.0	19.0
1.5-32-11 NTB	602030-8064	7g	11	1.5	1.0	32.0	12.0
1.5-44-11 NTB	602030-8065	7g	11	1.5	1.0	44.0	19.0
2.0-32-11 NTB	602030-8066	7g	11	2.0	1.5	32.0	12.0
2.0-44-11 NTB	602030-8067	8g	11	2.0	1.5	44.0	19.0
2.0-58-11 NTB	602030-8068	8g	11	2.0	1.5	58.0	33.0
2.5-32-11 NTB	602030-8069	7g	11	2.5	1.5	32.0	12.0
2.5-44-11 NTB	602030-8070	8g	11	2.5	1.5	44.0	19.0
2.5-58-11 NTB	602030-8071	8g	11	2.5	1.5	58.0	33.0

**M5 Thread Styli**  
**Styli (Type B)**

Ball: Ruby  
Shaft: Tungsten Carbide  
Ferrule: Steel



Order No.	Zeiss No.	wt	D mm	dk mm	d1 mm	L mm	ML mm
2.0-20-11 NTB	626115-020-020	6g	11	2.0	1.5	20.0	10.0
2.0-40-11 NTB	626115-0204-040	6g	11	2.0	1.5	40.0	30.0
2.5-20-11 NTB	626115-0250-020	6g	11	2.5	1.5	20.0	10.0
3.0-25-11 NTB	602030-9010	6g	11	3.0	2.0	25.0	15.0
3.0-33.5-11 NTB	600342-8020	6g	11	3.0	2.0	33.5	23.5
3.0-40-11 NTB	626115-0301-040	7g	11	3.0	2.0	40.0	30.0
3.0-50-11 NTB	602030-9011	7g	11	3.0	2.0	50.0	40.0
3.0-58-11 NTB	600342-8021	8g	11	3.0	2.0	58.0	48.0
4.0-33.5-11 NTB	600342-8025	7g	11	4.0	2.0	33.5	23.5
4.0-40-11 NTB	000000-1005-246	7g	11	4.0	2.0	40.0	30.0
4.0-50-11 NTB	626115-0402-050	8g	11	4.0	2.0	50.0	40.0
4.0-64-11 NTB	602030-9012	8g	11	4.0	2.0	64.0	54.0
5.0-40-11 NTB	626115-0500-040	11g	11	5.0	3.5	40.0	30.0
5.0-50-11 NTB	602030-9013	11g	11	5.0	3.5	50.0	40.0
5.0-53-11 NTB	600342-8022	12g	11	5.0	3.5	53.0	43.0
5.0-75-11 NTB	602030-9015	15g	11	5.0	3.5	75.0	65.0
5.0-80-11 NTB	626115-0502-080	16g	11	5.0	3.5	80.0	70.0
5.0-100-11 NTB		19g	11	5.0	3.5	100.0	90.0
6.0-54-11 NTB	600342-8026	12g	11	6.0	3.5	54.0	44.0
6.0-68-11 NTB	626115-0600-068	15g	11	6.0	3.5	68.0	58.0
7.0-55-11 NTB	600342-8027	13g	11	7.0	3.5	55.0	45.0
8.0-63.5-11 NTB	600342-8023	26g	11	8.0	6.0	63.5	50.5
8.0-74-11 NTB	602030-9014	32g	11	8.0	6.0	74.0	61.0
8.0-75-11 NTB	602030-9016	32g	11	8.0	6.0	75.0	62.0
8.0-100-11 NTB	602030-9017	42g	11	8.0	6.0	100.0	87.0
8.0-114.5-11 NTB	600342-8024	46g	11	8.0	6.0	114.5	101.5
8.0-150-11 NTB		62g	11	8.0	6.0	150.0	130.0
8.0-200-11 NTB		82g	11	8.0	6.0	200.0	180.0
9.0-64.5-11 NTB	600342-8028	27g	11	9.0	6.0	64.5	51.5
10.0-65.5-11 NTB	600342-8029	27g	11	10.0	6.0	65.5	52.5
10.0-118-11 NTB	602030-9018	49g	11	10.0	6.0	118.0	105.0
8.0-63.5-18 NTB	600342-8123	42g	18	8.0	6.0	63.5	41.5
8.0-114.5-18 NTB	600342-8124	63g	18	8.0	6.0	114.5	92.5
9.0-64.5-18 NTB	600342-8128	42g	18	9.0	6.0	64.5	42.5
10.0-65.5-18 NTB	600342-8129	43g	18	10.0	6.0	65.5	43.5

INDO SERVICES

TEL : 080 23406723, Fax : 080 23111346, E-mail : info@indoservices.net