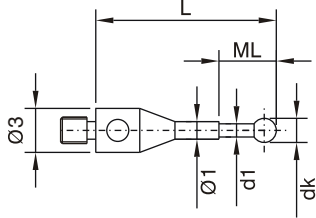


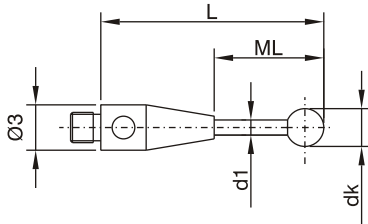
M2

M2 Thread Styli
Styli (Type A)



Order No.	Shaft	Ball	wt	dk mm	d1 mm	L mm	ML mm
0.2-10-2 NTA	TC	Ruby	0.3g	0.2	0.15	10.0	1.5
0.25-10-2 NTA	TC	Ruby	0.3g	0.25	0.2	10.0	2.5
0.3-10-2 NTA	TC	Ruby	0.3g	0.3	0.2	10.0	2.5
0.4-10-2 NTA	TC	Ruby	0.3g	0.4	0.3	10.0	2.5
0.5-10-2 NTA	TC	Ruby	0.3g	0.5	0.3	10.0	2.5
0.6-10-2 NTA	TC	Ruby	0.3g	0.6	0.4	10.0	2.5
0.6-12-2 NTA	TC	Ruby	0.3g	0.6	0.4	12.0	4.5
0.7-10-2 NTA	TC	Ruby	0.3g	0.7	0.4	10.0	2.5
0.7-12-2 NTA	TC	Ruby	0.3g	0.7	0.4	12.0	4.5
0.8-10-2 NTA	TC	Ruby	0.3g	0.8	0.6	10.0	2.5
0.8-12-2 NTA	TC	Ruby	0.3g	0.8	0.6	12.0	4.5
0.9-10-2 NTA	TC	Ruby	0.3g	0.9	0.6	10.0	2.5
0.9-12-2 NTA	TC	Ruby	0.3g	0.9	0.6	12.0	4.5
1.0-10-2 NTA	TC	Ruby	0.3g	1.0	0.8	10.0	2.5
1.0-12-2 NTA	TC	Ruby	0.3g	1.0	0.8	12.0	4.5

Styli (Type B)



Order No.	Shaft	Ball	wt	dk mm	d1 mm	L mm	ML mm
0.7-20-2 NTB	TC	Ruby	0.5g	0.7	0.5	20.0	12.0
1.0-10.5-2 NTB	TC	Ruby	0.3g	1.0	0.7	10.5	5.5
1.0-15.5-2 NTB	TC	Ruby	0.3g	1.0	0.7	15.5	10.5
1.0-20.5-2 NTB	TC	Ruby	0.3g	1.0	0.7	20.5	15.5
1.0-27.5-2 NTB	TC	Ruby	0.4g	1.0	0.7	27.5	20.5
1.0-30.5-2 NTB	TC	Ruby	0.4g	1.0	0.7	30.5	23.5
1.5-11-2 NTB	TC	Ruby	0.3g	1.5	0.7	11.0	6.0
1.5-16-2 NTB	TC	Ruby	0.3g	1.5	0.7	16.0	11.0
1.5-21-2 NTB	TC	Ruby	0.3g	1.5	0.7	21.0	16.0
1.5-31-2 NTB	TC	Ruby	0.3g	1.5	0.7	31.0	24.0
2.0-11-2 NTB	TC	Ruby	0.4g	2.0	1.0	11.0	6.0
2.0-16-2 NTB	TC	Ruby	0.4g	2.0	1.0	16.0	9.0
2.0-21-2 NTB	TC	Ruby	0.4g	2.0	1.0	21.0	14.0
2.0-26-2 NTB	TC	Ruby	0.5g	2.0	1.0	26.0	19.0
2.0-31-2 NTB	TC	Ruby	0.5g	2.0	1.0	31.0	24.0
2.0-36-2 NTB	TC	Ruby	0.6g	2.0	1.0	36.0	29.0
2.0-41-2 NTB	TC	Ruby	0.6g	2.0	1.0	41.0	34.0
2.5-11-2 NTB	TC	Ruby	0.3g	2.5	1.0	11.0	4.0
2.5-16-2 NTB	TC	Ruby	0.4g	2.5	1.0	16.0	9.0
2.5-21-2 NTB	TC	Ruby	0.4g	2.5	1.0	21.0	14.0
2.5-31-2 NTB	TC	Ruby	1.0g	2.5	1.5	31.0	24.0
2.5-41-2 NTB	TC	Ruby	1.2g	2.5	1.5	41.0	34.0
3.0-11.5-2 NTB	TC	Ruby	0.7g	3.0	1.5	11.5	6.5
3.0-21.5-2 NTB	TC	Ruby	0.9g	3.0	1.5	21.5	14.5
3.0-31.5-2 NTB	TC	Ruby	1.1g	3.0	1.5	31.5	24.5
3.0-36.5-2 NTB	TC	Ruby	1.2g	3.0	1.5	36.5	29.5
3.0-41.5-2 NTB	TC	Ruby	1.3g	3.0	1.5	41.5	31.5
3.0-46.5-2 NTB	TC	Ruby	1.5g	3.0	1.5	46.5	36.5
3.0-51.5-2 NTB	TC	Ruby	1.6g	3.0	1.5	51.5	41.5

TC = Tungsten Carbide

Styli Type B Contd. Page 5

