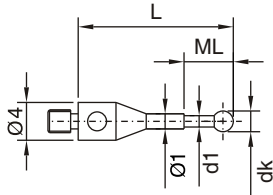


M3 (Ø 4 mm)

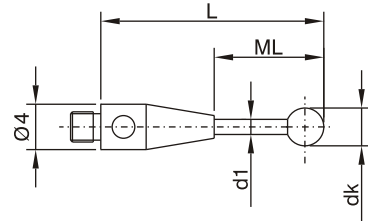
M3 Thread Styli

Styli (Type A)



Order No.	Shaft	Ball	wt	dk mm	d1 mm	L mm	ML mm
0.2-11-3 NTA	TC	Ruby	0.4g	0.2	0.15	11.0	1.5
0.25-11-3 NTA	TC	Ruby	0.4g	0.25	0.2	11.0	2.5
0.3-11-3 NTA	TC	Ruby	0.4g	0.3	0.2	11.0	2.5
0.4-11-3 NTA	TC	Ruby	0.4g	0.4	0.3	11.0	2.5
0.5-11-3 NTA	TC	Ruby	0.4g	0.5	0.3	11.0	2.5
0.6-11-3 NTA	TC	Ruby	0.4g	0.6	0.4	11.0	2.5
0.6-13-3 NTA	TC	Ruby	0.4g	0.6	0.4	13.0	4.5
0.7-11-3 NTA	TC	Ruby	0.4g	0.7	0.4	11.0	2.5
0.7-13-3 NTA	TC	Ruby	0.4g	0.7	0.4	13.0	4.5
0.8-11-3 NTA	TC	Ruby	0.4g	0.8	0.6	11.0	2.5
0.8-13-3 NTA	TC	Ruby	0.4g	0.8	0.6	13.0	4.5
0.9-11-3 NTA	TC	Ruby	0.4g	0.9	0.6	11.0	2.5
0.9-13-3 NTA	TC	Ruby	0.4g	0.9	0.6	13.0	4.5
1.0-11-3 NTA	TC	Ruby	0.4g	1.0	0.8	11.0	2.5
1.0-13-3 NTA	TC	Ruby	0.4g	1.0	0.8	13.0	4.5

Styli (Type B)



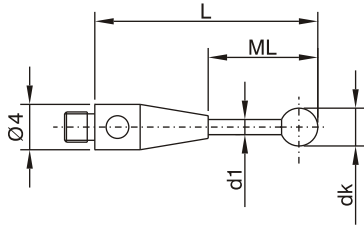
Order No.	Shaft	Ball	wt	dk mm	d1 mm	L mm	ML mm
1.0-10.5-3 NTB	TC	Ruby	0.7g	1.0	0.7	10.5	4.5
1.0-15.5-3 NTB	TC	Ruby	0.7g	1.0	0.7	15.5	7.5
1.0-20.5-3 NTB	TC	Ruby	0.7g	1.0	0.7	20.5	12.5
1.0-30.5-3 NTB	TC	Ruby	0.7g	1.0	0.7	30.5	22.5
1.5-16-3 NTB	TC	Ruby	0.6g	1.5	0.7	16.0	8.0
1.5-21-3 NTB	TC	Ruby	0.6g	1.5	0.7	21.0	13.0
1.5-31-3 NTB	TC	Ruby	1.0g	1.5	1.0	31.0	23.0
2.0-16-3 NTB	TC	Ruby	0.7g	2.0	1.0	16.0	8.0
2.0-21-3 NTB	TC	Ruby	0.7g	2.0	1.0	21.0	13.0
2.0-26-3 NTB	TC	Ruby	0.8g	2.0	1.0	26.0	18.0
2.0-31-3 NTB	TC	Ruby	0.9g	2.0	1.0	31.0	23.0
2.0-36-3 NTB	TC	Ruby	0.9g	2.0	1.0	36.0	28.0
2.0-41-3 NTB	TC	Ruby	1.0g	2.0	1.0	41.0	33.0
2.5-16-3 NTB	TC	Ruby	0.7g	2.5	1.0	16.0	8.0
2.5-21-3 NTB	TC	Ruby	0.7g	2.5	1.0	21.0	13.0
2.5-31-3 NTB	TC	Ruby	1.3g	2.5	1.5	31.0	23.0
2.5-41-3 NTB	TC	Ruby	1.5g	2.5	1.5	41.0	33.0
3.0-21.5-3 NTB	TC	Ruby	1.2g	3.0	1.5	21.5	13.5
3.0-31.5-3 NTB	TC	Ruby	1.4g	3.0	1.5	31.5	23.5
3.0-36.5-3 NTB	TC	Ruby	1.5g	3.0	1.5	36.5	28.5
3.0-41.5-3 NTB	TC	Ruby	1.6g	3.0	1.5	41.5	33.5
3.0-46.5-3 NTB	TC	Ruby	1.8g	3.0	1.5	46.5	38.5
3.0-51.5-3 NTB	TC	Ruby	1.9g	3.0	1.5	51.5	43.5
4.0-22-3 NTB	TC	Ruby	1.5g	4.0	2.0	22.0	12.0
4.0-32-3 NTB	TC	Ruby	1.9g	4.0	2.0	32.0	22.0
4.0-37-3 NTB	TC	Ruby	2.1g	4.0	2.0	37.0	27.0
4.0-42-3 NTB	TC	Ruby	2.4g	4.0	2.0	42.0	32.0
4.0-47-3 NTB	TC	Ruby	2.6g	4.0	2.0	47.0	37.0
4.0-52-3 NTB	TC	Ruby	2.8g	4.0	2.0	52.0	42.0
5.0-22.5-3 NTB	TC	Ruby	1.6g	5.0	2.0	22.5	12.5
5.0-32.5-3 NTB	TC	Ruby	2.0g	5.0	2.0	32.5	22.5
5.0-37.5-3 NTB	TC	Ruby	2.3g	5.0	2.0	37.5	27.5
5.0-42.5-3 NTB	TC	Ruby	2.5g	5.0	2.0	42.5	32.5
5.0-47.5-3 NTB	TC	Ruby	2.7g	5.0	2.0	47.5	37.5
5.0-52.5-3 NTB	TC	Ruby	2.9g	5.0	2.0	52.5	42.5

TC = Tungsten Carbide

Styli Type B Contd. in Page 23.

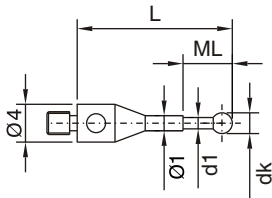
M3 (Ø 4 mm)

M3 Thread Styli Styli (Type B)



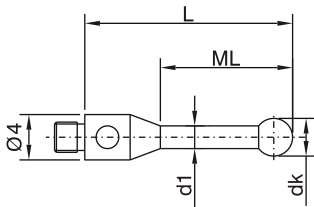
Order No.	Shaft	Ball	wt	dk mm	d1 mm	L mm	ML mm
6.0-23-3 NTB	TC	Ruby	1.8g	6.0	2.0	23.0	13.0
6.0-33-3 NTB	TC	Ruby	2.2g	6.0	2.0	33.0	23.0
6.0-38-3 NTB	TC	Ruby	2.4g	6.0	2.0	38.0	28.0
6.0-43-3 NTB	TC	Ruby	2.7g	6.0	2.0	43.0	33.0
6.0-48-3 NTB	TC	Ruby	2.9g	6.0	2.0	48.0	38.0
6.0-53-3 NTB	TC	Ruby	3.1g	6.0	2.0	53.0	43.0

Styli (Type BS)



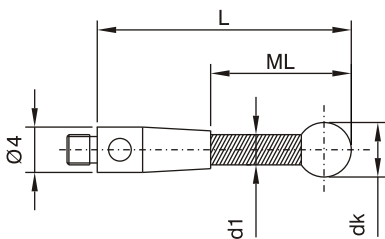
Order No.	Shaft	Ball	wt	dk mm	d1 mm	L mm	ML mm
0.5-21-3 NTBS	TC	Ruby	1.0g	0.5	0.3	21.0	2.5

Styli (Type C)



Order No.	Shaft	Ball	wt	dk mm	d1 mm	L mm	ML mm
1.0-21.5-3 NTC	Steel	Ruby	1.0g	1.0	0.7	21.5	5.0
2.0-11-3 NTC	Steel	Ruby	0.6g	2.0	1.2	11.0	5.0
2.0-16-3 NTC	Steel	Ruby	0.6g	2.0	1.2	16.0	10.0
2.0-22-3 NTC	Steel	Ruby	1.0g	2.0	1.4	22.0	8.0
2.5-21-3 NTC	Steel	Ruby	0.6g	2.5	1.5	21.0	15.0
3.0-11.5-3 NTC	Steel	Ruby	0.7g	3.0	2.0	11.5	5.5
3.0-21.5-3 NTC	Steel	Ruby	0.8g	3.0	2.0	21.5	15.5
3.0-22.5-3 NTC	Steel	Ruby	0.8g	3.0	2.0	22.5	16.5
4.0-12-3 NTC	Steel	Ruby	0.8g	4.0	2.4	12.0	6.0
4.0-22-3 NTC	Steel	Ruby	1.1g	4.0	2.4	22.0	16.0
4.0-23-3 NTC	Steel	Ruby	1.1g	4.0	2.4	23.0	17.0
4.0-33-3 NTC	Steel	Ruby	1.4g	4.0	2.4	33.0	27.0
5.0-23.5-3 NTC	Steel	Ruby	1.5g	5.0	3.0	23.5	17.5
5.0-33.5-3 NTC	Steel	Ruby	2.5g	5.0	3.0	33.5	29.5
6.0-13-3 NTC	Steel	Ruby	1.2g	6.0	2.8	13.0	7.0
6.0-28-3 NTC	Steel	Ruby	2.0g	6.0	3.0	28.0	22.0

Styli (Type K) Ceramic



Order No.	Shaft	Ball	wt	dk mm	d1 mm	L mm	ML mm
3.0-51.5-3 NTKE	Ceramic	Ruby	1.2g	3.0	2.0	51.5	41.5
4.0-32-3 NTKE	Ceramic	Ruby	1.7g	4.0	2.0	32.0	22.0
4.0-42-3 NTKE	Ceramic	Ruby	1.8g	4.0	2.0	42.0	32.0
4.0-52-3 NTKE	Ceramic	Ruby	1.9g	4.0	2.0	52.0	42.0
5.0-42.5-3 NTKE	Ceramic	Ruby	2.2g	5.0	3.0	42.5	32.5
5.0-52.5-3 NTKE	Ceramic	Ruby	2.5g	5.0	3.0	52.5	42.5
5.0-62.5-3 NTKE	Ceramic	Ruby	2.7g	5.0	3.0	62.5	52.5
6.0-43-3 NTKE	Ceramic	Ruby	2.5g	6.0	3.0	43.0	33.0
6.0-53-3 NTKE	Ceramic	Ruby	2.7g	6.0	3.0	53.0	43.0
6.0-63-3 NTKE	Ceramic	Ruby	3.0g	6.0	3.0	63.0	53.0

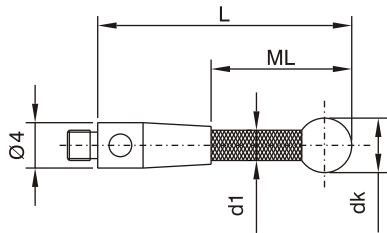
TC = Tungsten Carbide

INDO SERVICES

TEL : 080 23406723, Fax : 080 23111346, E-mail : info@indoservices.net

M3 (Ø 4 mm)

M3 Thread Styli
Styli (Type CA) Carbon Fiber

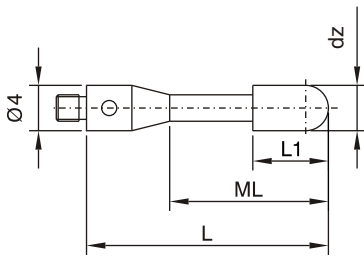


Order No.	Shaft	Ball	wt	dk mm	d1 mm	L mm	ML mm
4.0-32-3 NTCA	CF	Ruby	1.1g	4.0	3.0	32.0	22.0
4.0-42-3 NTCA	CF	Ruby	1.2g	4.0	3.0	42.0	32.0
4.0-52-3 NTCA	CF	Ruby	1.2g	4.0	3.0	52.0	42.0
5.0-42.5-3 NTCA	CF	Ruby	1.4g	5.0	3.0	42.5	32.5
5.0-52.5-3 NTCA	CF	Ruby	1.5g	5.0	3.0	52.5	42.5
5.0-62.5-3 NTCA	CF	Ruby	1.6g	5.0	3.0	62.5	52.5
6.0-43-3 NTCA	CF	Ruby	1.6g	6.0	3.0	43.0	33.0
6.0-53-3 NTCA	CF	Ruby	1.7g	6.0	3.0	53.0	43.0
6.0-63-3 NTCA	CF	Ruby	1.8g	6.0	3.0	63.0	53.0
6.0-78-3 NTCA	CF	Ruby	2.5g	6.0	4.0	78.0	67.0
6.0-103-3 NTCA	CF	Ruby	2.9g	6.0	4.0	103.0	92.0

CF = Carbon Fiber

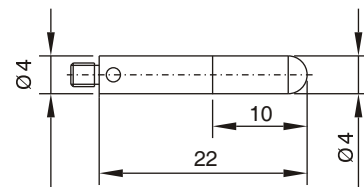
Cylinder styli (Type A)

Order No.	Shaft	Cylinder	wt	dz mm	L1 mm	L mm	ML mm
2.0-16-3 NZRA	Steel	Ruby	0.7g	2.0	5.0	16.0	8.0
3.0-22-3 NZRA	Steel	Ruby	0.9g	3.0	10.0	22.0	14.0



Cylinder styli (Type B)

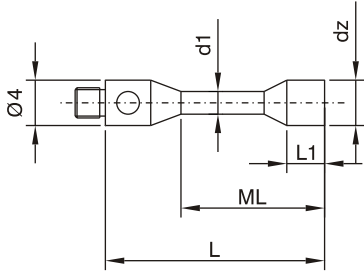
Order No.	Shaft	Cylinder	wt
4.0-22-3 NZRB	Steel	Ruby	1.6g



M3 ($\varnothing 4$ mm)

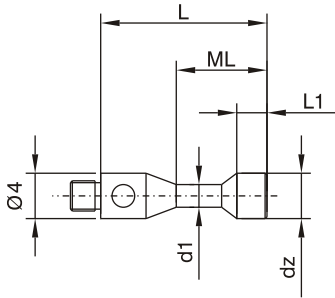
M3 Thread Styli
Cylinder styli (Type H)

Order No.	Shaft/ Cylinder	wt	dz mm	d1 mm	L1 mm	L mm	ML mm
1.5-14-3 NZTH	TC	0.9g	1.5	1.0	2.5	14.0	6.0
3.0-16-3 NZTH	TC	1.1g	3.0	1.5	3.5	16.0	8.0



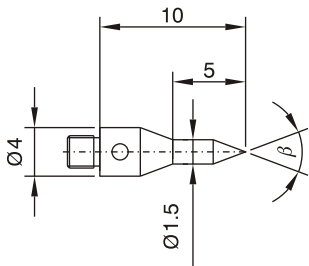
Cylinder styli (Type S)

Order No.	Shaft/ Cylinder	wt	dz mm	d1 mm	L1 mm	L mm	ML mm
1.5-13-3 NZTS	Steel	0.7g	1.5	1.0	1.5	13.0	4.0
2.0-13-3 NZTS	Steel	0.8g	2.0	1.5	2.0	13.0	4.0
2.5-15-3 NZTS	Steel	0.9g	2.5	1.7	2.5	15.0	5.5
3.0-15-3 NZTS	Steel	1.0g	3.0	2.0	4.0	15.0	5.5



Pointed styli

Order No.	Shaft	wt	β
30-13-3 NTS	TC	0.7g	30°
60-13-3 NTS	TC	0.7g	60°



TC = Tungsten Carbide

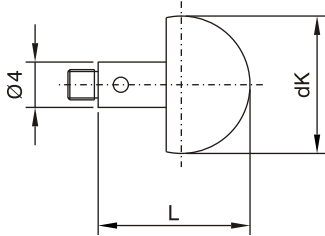
INDO SERVICES

TEL : 080 23406723, Fax : 080 23111346, E-mail : info@indoservices.net

M3 (Ø 4 mm)

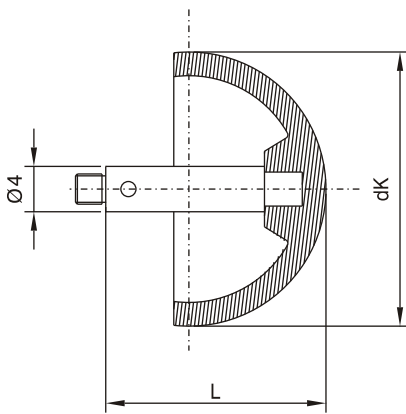
M3 Thread Styli
Ceramic ball styli

Order No.	Shaft	Ball	wt	dk mm	L mm
8.0-10-3 NKK	Steel	Ceramic	1.4g	8.0	10.0
10.0-11-3 NKK	Steel	Ceramic	2.0g	10.0	11.0



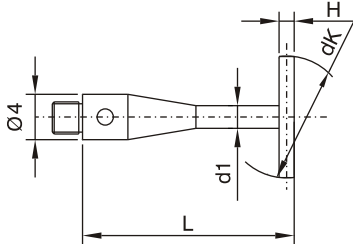
Hollow Ceramic ball styli (Type E)

Order No.	Shaft	Ball	wt	dk mm	L mm
18.0-16-3 NHKE	Steel	Ceramic	4.9g	18.0	16.0
24.0-19-3 NHKE	Steel	Ceramic	9.2g	24.0	19.0
30.0-22-3 NHKE	Steel	Ceramic	13.4g	30.0	22.0



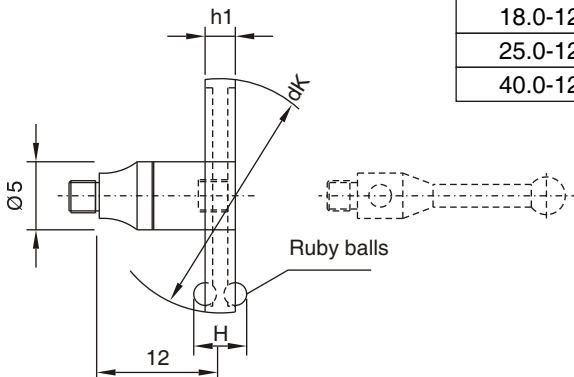
Ball disc styli

Order No.	Shaft	Disc	wt	dk mm	d1 mm	L mm	H mm
5.0-20-3 NKSK	TC	Ceramic	0.9g	5.0	1.5	20.0	0.5
10.0-25-3 NKSK	TC	Ceramic	1.8g	10.0	2.0	25.0	0.8
14.0-25-3 NKSK	TC	Ceramic	3.3g	14.0	2.0	25.0	1.0



Ball disc styli rotary

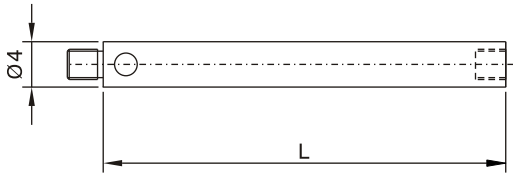
Order No.	Shaft	Disc	wt	dk mm	H mm	h1 mm
18.0-12-3 NKSD	Steel	Steel	3.1g	18.0	4.0	2.5
25.0-12-3 NKSD	Steel	Steel	4.2g	25.0	4.0	2.5
40.0-12-3 NKSD	Steel	Steel	11.3g	40.0	6.0	4.0



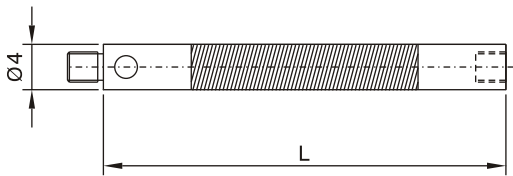
M3 thread stylus may be used. A built-in rotating adaptor allows stylus positioning.

M3 (Ø 4 mm)

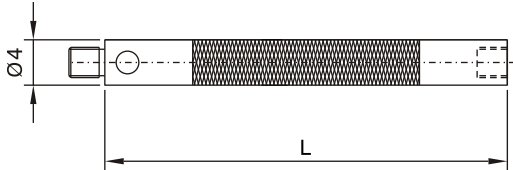
M3 Thread Styli	Order No.	Material	wt	L mm
Extensions, Steel	10-3 NV	Steel	0.7g	10.0
	20-3 NV	Steel	1.3g	20.0
	30-3 NV	Steel	1.8g	30.0
	35-3 NV	Steel	2.2g	35.0
	40-3 NV	Steel	2.4g	40.0
	50-3 NV	Steel	2.9g	50.0



Extensions, Light-weight Ceramic	Order No.	Material	wt	L mm
Extensions, Light-weight Ceramic	40-3 NVK	Ceramic	3.4g	40.0
	50-3 NVK	Ceramic	3.6g	50.0
	60-3 NVK	Ceramic	4.1g	60.0
	70-3 NVK	Ceramic	4.4g	70.0
	80-3 NVK	Ceramic	4.6g	80.0
	90-3 NVK	Ceramic	5.6g	90.0
	100-3 NVK	Ceramic	7.1g	100.0

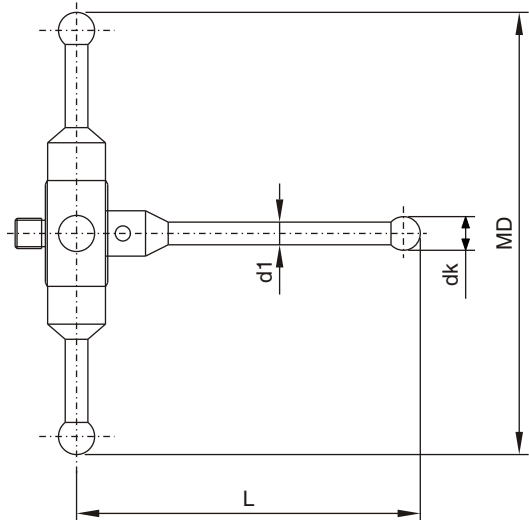


Extensions, Light-weight Carbon Fiber	Order No.	Material	wt	L mm
Extensions, Light-weight Carbon Fiber	40-3 NVCA	CF	1.4g	40.0
	50-3 NVCA	CF	1.7g	50.0
	60-3 NVCA	CF	1.8g	60.0
	70-3 NVCA	CF	2.1g	70.0
	75-3 NVCA	CF	2.1g	75.0
	80-3 NVCA	CF	2.2g	80.0
	90-3 NVCA	CF	2.3g	90.0
	100-3 NVCA	CF	2.5g	100.0



CF = Carbon Fiber

Star Styli Rotary (Type E)	Order No.	Shaft	Ball	wt	dk mm	d1 mm	MD mm	L mm
Star Styli Rotary (Type E)	2.0-32-3 NSTE	Steel	Ruby	7.8g	2.0	1.4	32.0	21.0
	2.0-52-3 NSTE	Steel	Ruby	8.4g	2.0	1.4	52.0	31.0



A built-in rotating adaptor allows styli positioning.

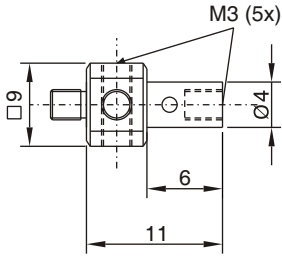
INDO SERVICES

TEL : 080 23406723, Fax : 080 23111346, E-mail : info@indoservices.net

M3 (\emptyset 4 mm)

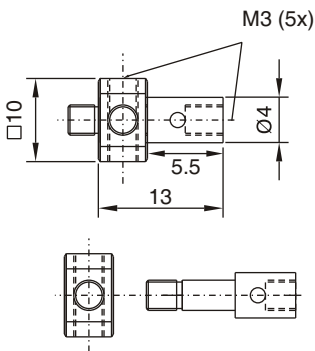
M3 Thread Styli	Order No.	Material	wt
Adaptor for styli (Type A) 5- way	9.0-11-3 NTHA	Steel	2.6g

For use with **M3 thread styli**.



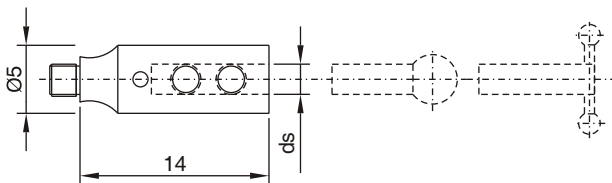
Adaptor for styli rotary (Type F) 5-Way	Order No.	Material	wt
	10.0-13-3 NTHF	Steel	3.3g

For use with **M3 thread styli**. A built in rotating adaptor allows stylus positioning.



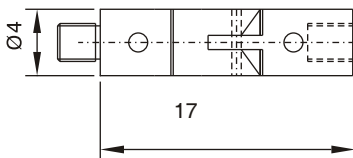
Adaptor for styli (Type Z)	Order No.	Material	wt	ds mm
	1.0-3 NHZ	Steel	1.7g	1.0
	1.5-3 NHZ	Steel	1.7g	1.5
	2.0-3 NHZ	Steel	1.6g	2.0

For use with **Styli (Type F), (Type N)** (Page 7), **T-Styli (Type H)** (Page 6).



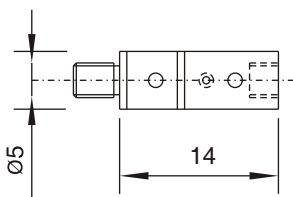
Knuckle joint rotary (Type B)	Order No.	Material	wt
	4.0-17-3 NGBD	Steel	1.5g

A built-in rotating adaptor allows stylus positioning.



Rotating adaptor	Order No.	Material	wt
	5.0-14-3 NDS	Steel	1.8g

Rotating adaptor allows stylus positioning.

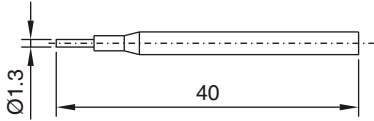


INDO SERVICES

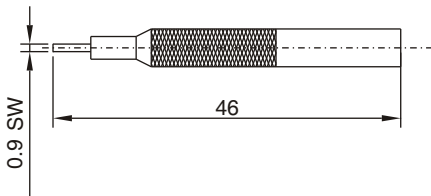
TEL : 080 23406723, Fax : 080 23111346, E-mail : info@indoservices.net

M3 TOOLS

Tools for components with M3 thread styli	Order No.	Description
	1.3 NWST	Ø1.3 mm for M3 thread components
Pin key		



Hexagon key	Order No.	Description
	0.9 NWSE	SW 0.9 mm



Cross-point key	Order No.	Description
	2.5 NWKR	2.5 mm

