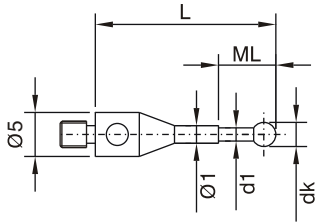


M4 (Ø 5 mm)

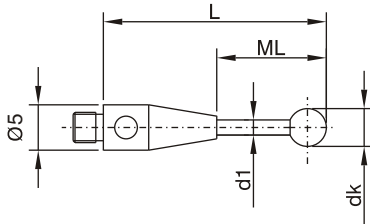
M4 Thread Styli

Styli (Type A)



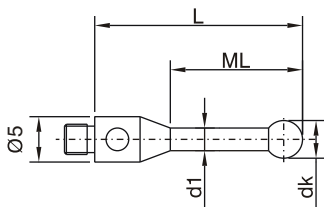
Order No.	Shaft	Ball	wt	dk mm	d1 mm	L mm	ML mm
0.2-13-4 NTA	TC	Ruby	0.4g	0.2	0.15	13.0	1.5
0.25-13-4 NTA	TC	Ruby	0.4g	0.25	0.2	13.0	2.5
0.3-13-4 NTA	TC	Ruby	0.4g	0.3	0.2	13.0	2.5
0.4-13-4 NTA	TC	Ruby	0.4g	0.4	0.3	13.0	2.5
0.5-13-4 NTA	TC	Ruby	0.4g	0.5	0.3	13.0	2.5
0.6-13-4 NTA	TC	Ruby	0.4g	0.6	0.4	13.0	2.5
0.6-15-4 NTA	TC	Ruby	0.4g	0.6	0.4	15.0	4.5
0.7-13-4 NTA	TC	Ruby	0.4g	0.7	0.4	13.0	2.5
0.7-15-4 NTA	TC	Ruby	0.4g	0.7	0.4	15.0	4.5
0.8-13-4 NTA	TC	Ruby	0.4g	0.8	0.6	13.0	2.5
0.8-15-4 NTA	TC	Ruby	0.4g	0.8	0.6	15.0	4.5
0.9-13-4 NTA	TC	Ruby	0.4g	0.9	0.6	13.0	2.5
0.9-15-4 NTA	TC	Ruby	0.4g	0.9	0.6	15.0	4.5
1.0-13-4 NTA	TC	Ruby	0.4g	1.0	0.8	13.0	2.5
1.0-15-4 NTA	TC	Ruby	0.4g	1.0	0.8	15.0	4.5

Styli (Type B)



Order No.	Shaft	Ball	wt	dk mm	d1 mm	L mm	ML mm
1.0-15.5-4 NTB	TC	Ruby	1.7g	1.0	0.7	15.5	7.5
1.0-20.5-4 NTB	TC	Ruby	1.7g	1.0	0.7	20.5	12.5
2.0-16-4 NTB	TC	Ruby	1.7g	2.0	1.2	16.0	8.0
2.0-26-4 NTB	TC	Ruby	1.8g	2.0	1.2	26.0	18.0
2.0-36-4 NTB	TC	Ruby	1.9g	2.0	1.2	36.0	28.0
2.0-41-4 NTB	TC	Ruby	2.0g	2.0	1.2	41.0	33.0
3.0-31.5-4 NTB	TC	Ruby	2.4g	3.0	2.0	31.5	21.5
3.0-41.5-4 NTB	TC	Ruby	2.6g	3.0	2.0	41.5	31.5
3.0-51.5-4 NTB	TC	Ruby	2.9g	3.0	2.0	51.5	41.5
4.0-32-4 NTB	TC	Ruby	2.9g	4.0	2.5	32.0	22.0
4.0-42-4 NTB	TC	Ruby	3.4g	4.0	2.5	42.0	32.0
4.0-52-4 NTB	TC	Ruby	3.8g	4.0	2.5	52.0	42.0
5.0-32.5-4 NTB	TC	Ruby	3.0g	5.0	2.5	32.5	22.5
5.0-42.5-4 NTB	TC	Ruby	3.5g	5.0	2.5	42.5	32.5
5.0-52.5-4 NTB	TC	Ruby	3.9g	5.0	2.5	52.5	42.5
6.0-33-4 NTB	TC	Ruby	3.2g	6.0	3.0	33.0	23.0
6.0-43-4 NTB	TC	Ruby	3.7g	6.0	3.0	43.0	33.0
6.0-53-4 NTB	TC	Ruby	4.1g	6.0	3.0	53.0	43.0

Styli (Type C)



Order No.	Shaft	Ball	wt	dk mm	d1 mm	L mm	ML mm
2.0-16-4 NTC	Steel	Ruby	1.3g	2.0	1.3	16.0	10.0
2.5-21-4 NTC	Steel	Ruby	1.3g	2.5	1.5	21.0	15.0
3.0-21.5-4 NTC	Steel	Ruby	1.5g	3.0	2.0	21.5	15.5
4.0-22-4 NTC	Steel	Ruby	1.7g	4.0	2.4	22.0	16.0
6.0-28-4 NTC	Steel	Ruby	2.6g	6.0	3.0	28.0	22.0

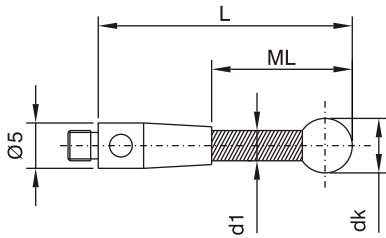
TC = Tungsten Carbide

INDO SERVICES

TEL : 080 23406723, Fax : 080 23111346, E-mail : info@indoservices.net

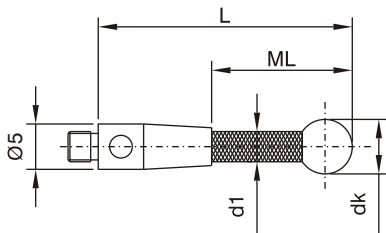
M4 (Ø 5 mm)

M4 Thread Styli Styli (Type K), Ceramic



Order No.	Shaft	Ball	wt	dk mm	d1 mm	L mm	ML mm
4.0-32-4 NTKE	Ceramic	Ruby	2.4g	4.0	2.0	32.0	22.0
4.0-42-4 NTKE	Ceramic	Ruby	2.6g	4.0	2.0	42.0	32.0
4.0-52-4 NTKE	Ceramic	Ruby	2.7g	4.0	2.0	52.0	42.0
5.0-42.5-4 NTKE	Ceramic	Ruby	3.1g	5.0	3.0	42.5	32.5
5.0-52.5-4 NTKE	Ceramic	Ruby	3.3g	5.0	3.0	52.5	42.5
5.0-62.5-4 NTKE	Ceramic	Ruby	3.5g	5.0	3.0	62.5	52.5
6.0-43-4 NTKE	Ceramic	Ruby	3.2g	6.0	3.0	43.0	33.0
6.0-53-4 NTKE	Ceramic	Ruby	3.5g	6.0	3.0	53.0	43.0
6.0-63-4 NTKE	Ceramic	Ruby	3.7g	6.0	3.0	63.0	53.0

Styli (Type CA) Carbon Fiber



Order No.	Shaft	Ball	wt	dk mm	d1 mm	L mm	ML mm
4.0-32-4 NTCA	CF	Ruby	1.7g	4.0	3.0	32.0	22.0
4.0-42-4 NTCA	CF	Ruby	1.7g	4.0	3.0	42.0	32.0
4.0-52-4 NTCA	CF	Ruby	1.9g	4.0	3.0	52.0	42.0
5.0-42.5-4 NTCA	CF	Ruby	1.9g	5.0	3.0	42.5	32.5
5.0-52.5-4 NTCA	CF	Ruby	1.9g	5.0	3.0	52.5	42.5
5.0-62.5-4 NTCA	CF	Ruby	2.0g	5.0	3.0	62.5	52.5
6.0-43-4 NTCA	CF	Ruby	1.9g	6.0	3.0	43.0	33.0
6.0-53-4 NTCA	CF	Ruby	2.1g	6.0	3.0	53.0	43.0
6.0-63-4 NTCA	CF	Ruby	2.4g	6.0	3.0	63.0	53.0

CF = Carbon Fiber

INDO SERVICES

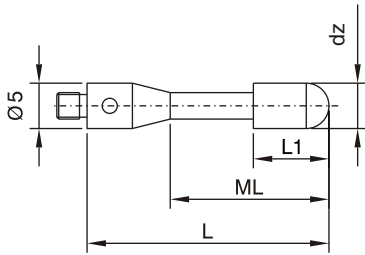
TEL : 080 23406723, Fax : 080 23111346, E-mail : info@indoservices.net

M4 (Ø 5 mm)

M4 Thread Styli

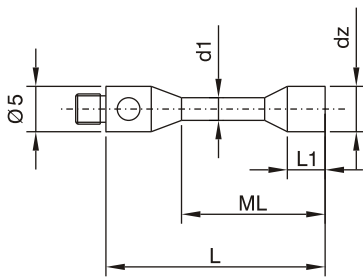
Cylinder styli (Type A)

Order No.	Shaft	Cylinder	wt	dz mm	L1 mm	L mm	ML mm
2.0-16-4 NZRA	Steel	Ruby	1.3g	2.0	5.0	16.0	8.0
3.0-22-4 NZRA	Steel	Ruby	1.5g	3.0	10.0	22.0	14.0
4.0-22-4 NZRA	Steel	Ruby	2.2g	4.0	10.0	22.0	14.0



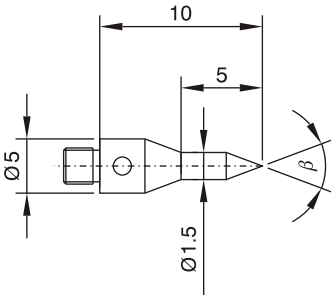
Cylinder styli (Type H)

Order No.	Shaft / Cylinder	wt	dz mm	d1 mm	L1 mm	L mm	ML mm
1.5-14-4 NZTH	TC	1.5g	1.5	1.0	2.5	14.0	6.0
3.0-16-4 NZTH	TC	1.7g	3.0	1.5	3.5	16.0	8.0



Pointed styli

Order No.	Point	wt	β
30-13-4 NTS	TC	1.2g	30°
60-13-4 NTS	TC	1.2g	60°



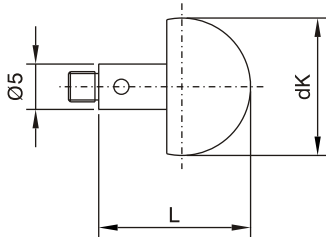
TC = Tungsten Carbide

INDO SERVICES

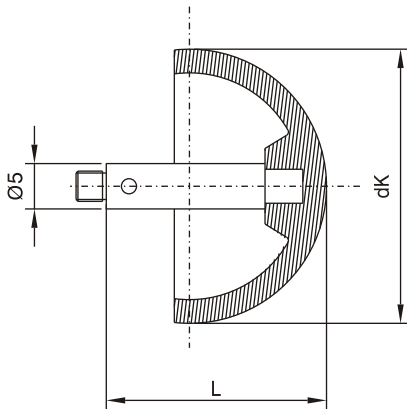
TEL : 080 23406723, Fax : 080 23111346, E-mail : info@indoservices.net

M4 (Ø 5 mm)

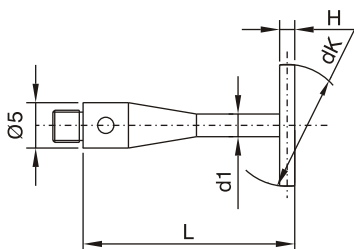
M4 Thread Styli	Order No.	Shaft	Ball	wt	dk mm	L mm
Ceramic ball styli	8.0-10-4 NKK	Steel	Ceramic	1.8g	8.0	10.0
	10.0-11-4 NKK	Steel	Ceramic	2.4g	10.0	11.0



Hollow Ceramic ball styli (Type E)	Order No.	Shaft	Ball	wt	dk mm	L mm
	18.0-16-4 NHKE	Steel	Ceramic	5.3g	18.0	16.0
	24.0-19-4 NHKE	Steel	Ceramic	9.6g	24.0	19.0
	30.0-22-4 NHKE	Steel	Ceramic	13.8g	30.0	22.0



Ball disc styli	Order No.	Shaft	Disc	wt	dk mm	d1 mm	L mm	H mm
	5.0-20-4 NKSK	TC	Ceramic	1.3g	5.0	1.5	20.0	0.5
	10.0-25-4 NKSK	TC	Ceramic	2.2g	10.0	2.0	25.0	0.8
	14.0-25-4 NKSK	TC	Ceramic	3.7g	14.0	2.0	25.0	1.0

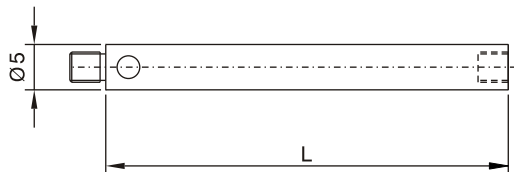


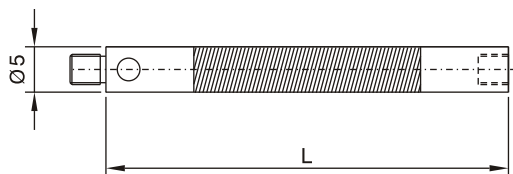
INDO SERVICES

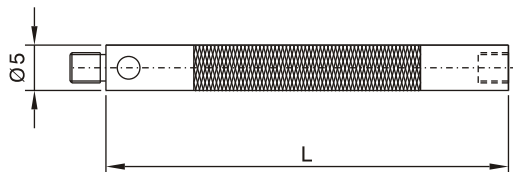
TEL : 080 23406723, Fax : 080 23111346, E-mail : info@indoservices.net

M4 (Ø 5 mm)

M4 Thread Styli	Order No.	Material	wt	L mm
Extensions, Steel	10-4 NV	Steel	1.8g	10.0
	20-4 NV	Steel	3.6g	20.0
	35-4 NV	Steel	6.3g	35.0



Extensions, Ceramic	Order No.	Material	wt	L mm
	50-4 NVK	Ceramic	4.8g	50.0
	60-4 NVK	Ceramic	5.4g	60.0
	70-4 NVK	Ceramic	5.5g	70.0
	80-4 NVK	Ceramic	5.7g	80.0
	90-4 NVK	Ceramic	5.9g	90.0
	100-4 NVK	Ceramic	6.2g	100.0

Extensions, Carbon Fiber	Order No.	Material	wt	L mm
	50-4 NVCA	CF	2.9g	50.0
	60-4 NVCA	CF	3.4g	60.0
	70-4 NVCA	CF	3.8g	70.0
	80-4 NVCA	CF	4.0g	80.0
	90-4 NVCA	CF	4.6g	90.0
	100-4 NVCA	CF	5.5g	100.0

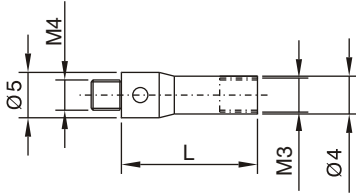
CF = Carbon Fiber

INDO SERVICES

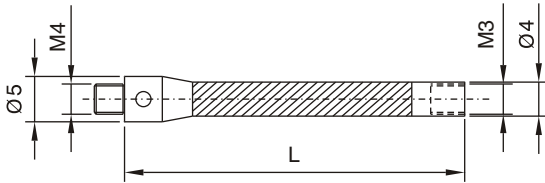
TEL : 080 23406723, Fax : 080 23111346, E-mail : info@indoservices.net

M4 (Ø 5 mm)

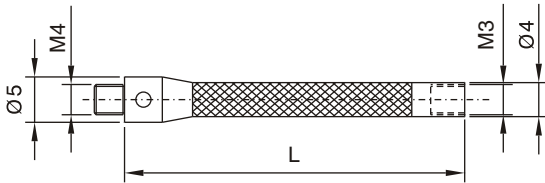
M4 Thread Styli	Order No.	Material	wt	L mm
Extensions / Adaptor M4 / M3 (Steel)	20-4-3 NV	Steel	2.0g	20.0



Extensions / Adaptor M4 / M3 (Ceramic)	Order No.	Material	wt	L mm
	50-4-3 NVK	Ceramic	3.6g	50.0
	75-4-3 NVK	Ceramic	5.2g	75.0
	100-4-3 NVK	Ceramic	6.7g	100.0

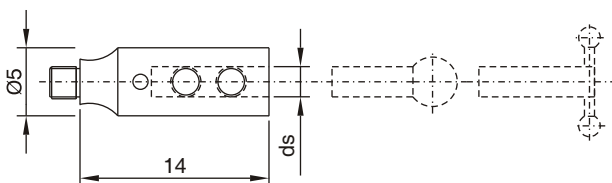


Extensions / Adaptor M4 / M3 (Carbon Fiber)	Order No.	Material	wt	L mm
	50-4-3 NVCA	CF	2.3g	50.0
	75-4-3 NVCA	CF	3.0g	75.0
	100-4-3 NVCA	CF	3.7g	100.0



CF = Carbon Fiber

Adaptor for styli (Type Z)	Order No.	Material	wt	ds mm
	1.0-4 NHZ	Steel	1.7g	1.0
	1.5-4 NHZ	Steel	1.7g	1.5
	2.0-4 NHZ	Steel	1.6g	2.0



For use with **Styli (Type F)**, **(Type N)** (Page 7), and **T-Styli (Type H)** (Page 6).

INDO SERVICES

TEL : 080 23406723, Fax : 080 23111346, E-mail : info@indoservices.net