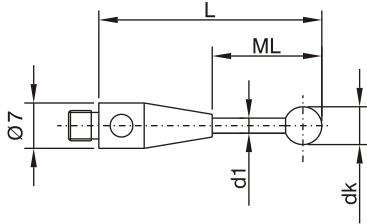


M4 (Ø 7 mm)

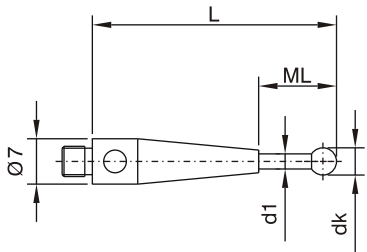
M4 thread styli (Ø 7mm)

Styli (Type B)



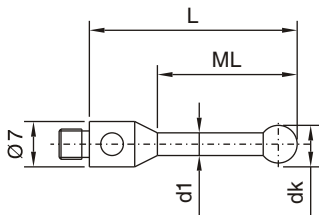
Order No.	Shaft	Ball	wt	dk mm	d1 mm	L mm	ML mm
1.0-20.5-7 NTB	TC	Ruby	2.4g	1.0	0.7	20.5	10.5
2.0-21-7 NTB	TC	Ruby	3.0g	2.0	1.5	21.0	11.0
2.0-51-7 NTB	TC	Ruby	3.3g	2.0	1.5	51.0	41.0
3.0-21.5-7 NTB	TC	Ruby	3.5g	3.0	1.5	21.5	11.5
3.0-51.5-7 NTB	TC	Ruby	4.4g	3.0	2.0	51.5	39.5
4.0-22-7 NTB	TC	Ruby	3.5g	4.0	2.0	22.0	10.0
4.0-52-7 NTB	TC	Ruby	5.0g	4.0	2.0	52.0	40.0
5.0-22.5-7 NTB	TC	Ruby	4.5g	5.0	2.5	22.5	8.5
5.0-52.5-7 NTB	TC	Ruby	6.7g	5.0	2.5	52.5	38.5
6.0-23-7 NTB	TC	Ruby	4.7g	6.0	2.5	23.0	9.0
6.0-53-7 NTB	TC	Ruby	6.9g	6.0	2.5	53.0	39.0

Styli (Type BS)



Order No.	Shaft	Ball	wt	dk mm	d1 mm	L mm	ML mm
0.5-20-7 NTBS	TC	Ruby	2.8g	0.5	0.3	20.0	2.5
1.0-20-7 NTBS	TC	Ruby	2.9g	1.0	0.8	20.0	5.0

Styli (Type C)



Order No.	Shaft	Ball	wt	dk mm	d1 mm	L mm	ML mm
2.0-20-7 NTC	Steel	Ruby	2.3g	2.0	1.5	20.0	9.0
3.0-20-7 NTC	Steel	Ruby	2.0g	3.0	2-3	20.0	15.0
4.0-20-7 NTC	Steel	Ruby	2.2g	4.0	3.0	20.0	15.0
5.0-12.5-7 NTC	Steel	Ruby	2.0g	5.0	3.0	12.5	7.5
5.0-20-7 NTC	Steel	Ruby	2.5g	5.0	3.5	20.0	15.0
5.0-22.5-7 NTC	Steel	Ruby	2.5g	5.0	3.0	22.5	17.5
5.0-32.5-7 NTC	Steel	Ruby	3.0g	5.0	3.0	32.5	27.5
5.0-52.5-7 NTC	Steel	Ruby	7.1g	5.0	4.0	52.5	36.5
5.0-102.5-7 NTC	Steel	Ruby	12.0g	5.0	4.0	102.5	86.5
5.0-152.5-7 NTC	Steel	Ruby	17.0g	5.0	4.0	152.5	136.5
6.0-20-7 NTC	Steel	Ruby	3.1g	6.0	4.5	20.0	15.5
6.0-28-7 NTC	Steel	Ruby	3.8g	6.0	4.0	28.0	23.0
8.0-20-7 NTC	Steel	Ruby	3.9g	8.0	5.5	20.0	15.5

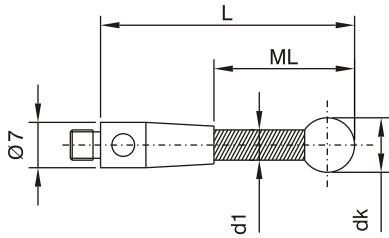
TC = Tungsten Carbide

INDO SERVICES

TEL : 080 23406723, Fax : 080 23111346, E-mail : info@indoservices.net

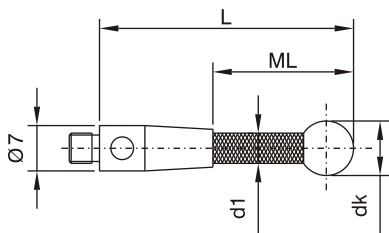
M4 (Ø 7 mm)

M4 thread styli (Ø 7mm) Styli (Type K)



Order No.	Shaft	Ball	wt	dk mm	d1 mm	L mm	ML mm
4.0-52-7 NTKE	Ceramic	Ruby	4.3g	4.0	3.0	52.0	36.0
4.0-77-7 NTKE	Ceramic	Ruby	4.9g	4.0	3.0	77.0	61.0
4.0-102-7 NTKE	Ceramic	Ruby	5.6g	4.0	3.0	102.0	86.0
5.0-52.5-7 NTKE	Ceramic	Ruby	5.0g	5.0	3.5	52.5	36.5
5.0-77.5-7 NTKE	Ceramic	Ruby	5.7g	5.0	3.5	77.5	61.5
5.0-102.5-7 NTKE	Ceramic	Ruby	6.5g	5.0	3.5	102.5	86.5
6.0-50-7 NTKE	Ceramic	Ruby	5.4g	6.0	4.5	50.0	34.0
6.0-53-7 NTKE	Ceramic	Ruby	5.6g	6.0	4.5	53.0	37.0
6.0-78-7 NTKE	Ceramic	Ruby	6.0g	6.0	4.5	78.0	62.0
6.0-100-7 NTKE	Ceramic	Ruby	8.5g	6.0	4.5	100.0	84.0
6.0-103-7 NTKE	Ceramic	Ruby	8.7g	6.0	4.5	103.0	87.0
6.0-153-7 NTKE	Ceramic	Ruby	11.8g	6.0	4.5	153.0	137.0
8.0-54-7 NTKE	Ceramic	Ruby	6.1g	8.0	4.5	54.0	38.0
8.0-79-7 NTKE	Ceramic	Ruby	7.5g	8.0	4.5	79.0	63.0
8.0-104-7 NTKE	Ceramic	Ruby	9.2g	8.0	4.5	104.0	88.0
8.0-154-7 NTKE	Ceramic	Ruby	12.2g	8.0	4.5	154.0	138.0
8.0-204-7 NTKE	Ceramic	Ruby	15.3g	8.0	4.5	204.0	188.0

Styli (Type CA)

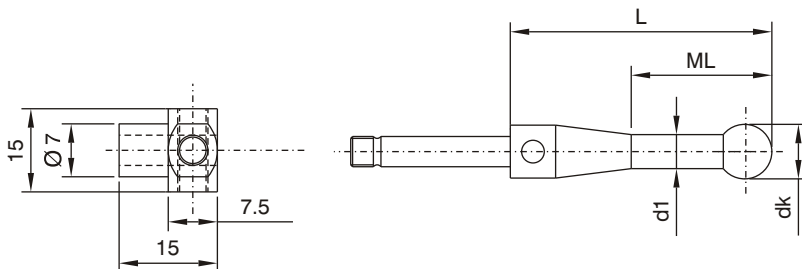


Order No.	Shaft	Ball	wt	dk mm	d1 mm	L mm	ML mm
4.0-52-7 NTCA	CF	Ruby	3.4g	4.0	3.0	52.0	36.0
6.0-53-7 NTCA	CF	Ruby	3.8g	6.0	4.0	53.0	37.0
6.0-103-7 NTCA	CF	Ruby	4.8g	6.0	4.0	103.0	87.0
6.0-153-7 NTCA	CF	Ruby	5.7g	6.0	4.0	153.0	137.0
6.0-203-7 NTCA	CF	Ruby	6.5g	6.0	4.0	203.0	187.0
6.0-303-7 NTCA	CF	Ruby	8.2g	6.0	4.0	303.0	287.0
8.0-304-7 NTCA	CF	Ruby	8.8g	8.0	4.0	304.0	288.0

CF = Carbon Fiber

Adaptor for styli, rotary Styli (Type KL) ceramic

Order No.	Shaft	Ball	wt	dk mm	d1 mm	L mm	ML mm
15.0-15-7 NTHL			10.3g				
6.0-53-7 NTKL	Ceramic	Ruby	7.0g	6.0	4.5	53.0	37.0
6.0-103-7 NTKL	Ceramic	Ruby	7.5g	6.0	4.5	103.0	87.0

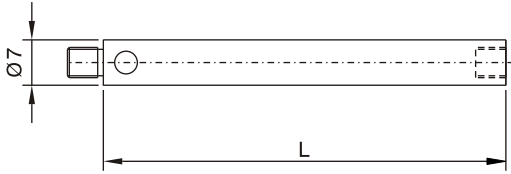


INDO SERVICES

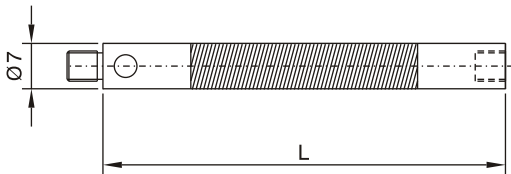
TEL : 080 23406723, Fax : 080 23111346, E-mail : info@indoservices.net

M4 (Ø 7 mm)

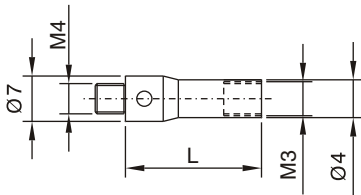
M4 thread styli (Ø 7mm)	Order No.	Material	wt	L mm
Extensions, Steel	10-7 NV	Steel	2.5g	10.0
	15-7 NV	Steel	3.9g	15.0
	20-7 NV	Steel	5.4g	20.0
	30-7 NV	Steel	8.4g	30.0
	35-7 NV	Steel	9.9g	35.0
	50-7 NV	Steel	14.0g	50.0



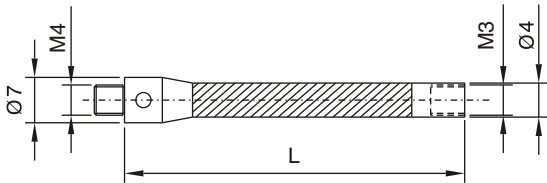
Extensions, Ceramic	Order No.	Material	wt	L mm
Extensions, Ceramic	30-7 NVK	Ceramic	6.7g	30.0
	50-7 NVK	Ceramic	8.9g	50.0
	100-7 NVK	Ceramic	13.8g	100.0



Extensions / Adaptor M4 / M3 (Steel)	Order No.	Material	wt	L mm
Extensions / Adaptor M4 / M3 (Steel)	20-7-3 NV	Steel	2.8g	20.0



Extensions / Adaptor M4 / M3 (Ceramic)	Order No.	Material	wt	L mm
Extensions / Adaptor M4 / M3 (Ceramic)	50-7-3 NVK	Ceramic	5.2g	50.0
	75-7-3 NVK	Ceramic	6.6g	75.0
	100-7-3 NVK	Ceramic	8.4g	100.0



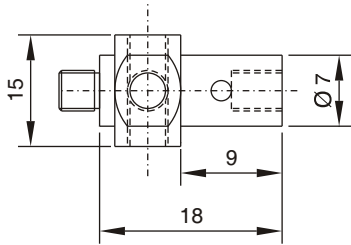
INDO SERVICES

TEL : 080 23406723, Fax : 080 23111346, E-mail : info@indoservices.net

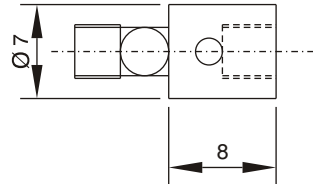
M4 (Ø 7 mm)

M4 thread styli (Ø 7mm)	Order No.	Material	wt
Adaptor for styli rotary (Type F)	15.0-18-7 NTHF	Steel	11.9g

For use with M4 thread styli. A built in rotating adaptor allows stylus positioning.

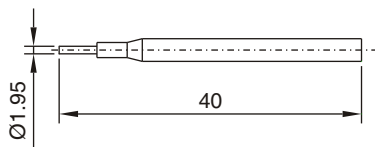


Crash protection adaptor	Order No.	Material	wt
	8-7 NSR	Steel	1.9g

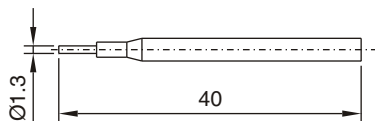


M4 TOOLS

Tools for components with M4 thread styli (Ø 7mm)	Order No.	Description
Pin key	1.95 NWST	Ø 1.95 mm for M4 thread components



Tools for components with M4 thread styli (Ø 5mm)	Order No.	Description
Pin key	1.3 NWST	Ø 1.3 mm for M4 thread components



INDO SERVICES

TEL : 080 23406723, Fax : 080 23111346, E-mail : info@indoservices.net