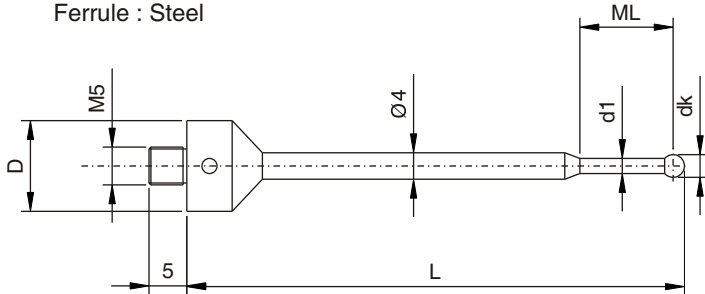


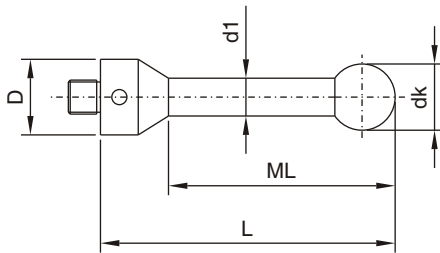
M5 FOR LEITZ

M5 Thread Styli	Order No.	Leitz No.	wt	D mm	dk mm	d1 mm	L mm	ML mm
Styli (Type BA)	2.0-41-12 NTBA	060-694.150-015	7.2g	12	2.0	1.5	41.0	16.0
	2.0-67-12 NTBA	060-694.150-006	11.0g	12	2.0	1.5	67.0	16.0

Ball: Ruby
Shaft: Tungsten carbide
Ferrule : Steel

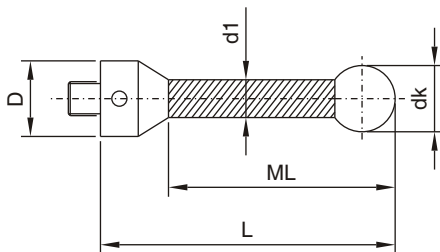


Styli (Type B)	Order No.	Leitz No.	wt	D mm	dk mm	d1 mm	L mm	ML mm
Ball: Ruby Shaft: Tungsten carbide Ferrule : Steel	1.5-28.7-12 NTB	M00-694.150-016	9.0g	12	1.5	1.0	28.7	7.7
	1.5-40.7-12 NTB	060-694.150-010	10.0g	12	1.5	1.0	40.7	19.7
	2.0-31-12 NTB	060-694.150-007	7.3g	12	2.0	1.5	31.0	20.0
	2.0-36-12 NTB	060-694.150-008	7.5g	12	2.0	1.5	36.0	25.0
	2.0-42-12 NTB	060-694.150-013	7.6g	12	2.0	1.5	42.0	31.0
	2.0-61-12 NTB	060-694.150-012	11.1g	12	2.0	1.5	61.0	41.0
	3.0-36.5-12 NTB	060-694.050-000	8.0g	12	3.0	2.0	36.5	25.5
	3.0-51.5-12 NTB	060-694.051-000	8.7g	12	3.0	2.0	51.5	40.5
	3.5-92.7-12 NTB	060-694.150-005	15.5g	12	3.5	3.0	92.7	81.7
	4.0-57-12 NTB	M00-694.150-017	11.8g	12	4.0	3.0	57.0	46.0
	4.0-82-12 NTB	M00-694.150-018	15.0g	12	4.0	2.5	82.0	71.0
	5.0-62.5-12 NTB	060-694.053-000	16.0g	12	5.0	3.5	62.5	51.5
	5.0-82.5-12 NTB	060-694.054-000	16.9g	12	5.0	3.5	82.5	71.5
	8.0-94-12 NTB	060-694.056-000	43.7g	12	8.0	6.0	94.0	78.0
	8.0-129-12 NTB	060-694.057-000	57.7g	12	8.0	6.0	129.0	113.0
	8.0-180-12 NTB	060-694.150-014	78.3g	12	8.0	6.0	180.0	164.0

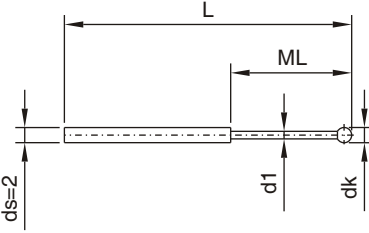


Styli (Type K) Ceramic	Order No.	Leitz No.	wt	D mm	dk mm	d1 mm	L mm	ML mm
Ball: Ruby Shaft: Ceramic Ferrule : Steel	8.0-94-12 NTKE	060-813.042-000	17.0g	12	8.0	6.0	94.0	78.0
	8.0-129-12 NTKE	060-813.041-000	25.4g	12	8.0	6.0	129.0	113.0
	* 15.0-97.5-12 NTKE	M00-694.186-000	26.3g	12	15.0	6.0	97.5	81.5

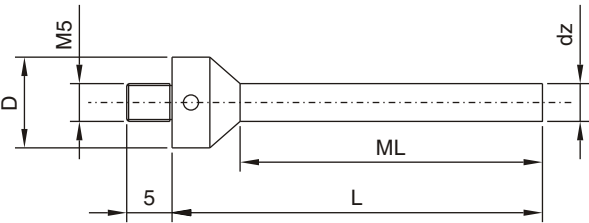
* Ball supplied is Ceramic.



M5 FOR LEITZ

M5 Thread Styli	Order No.	Leitz No.	wt	dk mm	d1 mm	L mm	ML mm
Styli (Type F) Ball: Ruby Shaft: Tungsten carbide 	0.3-15.3-2 NTF	M40-021.810-001	0.5g	0.3	0.2	15.3	2.5
	0.5-15.5-2 NTF	M40-021.810-002	0.5g	0.5	0.3	15.5	2.5
	0.5-22.3-2 NTF	-	0.6g	0.5	0.3	22.3	4.3
	0.6-15.6-2 NTF	M40-021.810-003	0.5g	0.6	0.4	15.6	4.5
	0.8-15.8-2 NTF	M40-021.810-004	0.5g	0.8	0.6	15.8	4.5
	0.8-22.4-2 NTF		0.6g	0.8	0.6	22.4	4.4
	1.0-16-2 NTF	M40-021.810-005	0.5g	1.0	0.8	16.0	4.5
	1.0-22.5-2 NTF	M00-694.062-005	0.6g	1.0	0.8	22.5	4.5
	* 1.0-34.2-2 NTF	060-694.151-007	0.6g	1.0	0.8	34.2	14.2
	1.0-34.5-2 NTF	060-694.151-009	0.6g	1.0	0.8	34.5	14.5
	1.5-22.7-2 NTF	060-694.066-000	0.7g	1.5	1.2	22.7	10.3
	1.8-46.9-2 NTF	060-694.151-005	1.8g	1.8	1.5	46.9	40.9
	2.0-23-2 NTF	060-694.065-000	0.8g	2.0	1.5	23.0	10.6
	* 4.0-34.5-2 NTF	060-694.151-006	1.2g	4.0	2.0	34.5	34.5

* Tungsten Carbide flattened ball
 For use with adaptor for styli (page 53).

Cylinder styli	Order No.	Leitz No.	wt	D mm	dz mm	L mm	ML mm
Cylinder: Tungsten carbide Ferrule : Steel 	3.0-50-12 NZTH	060-694.152-008	11.2g	12	3.0	50.0	39.0
	5.0-50-12 NZTH	060-694.152-009	18.0g	12	5.0	50.0	39.0