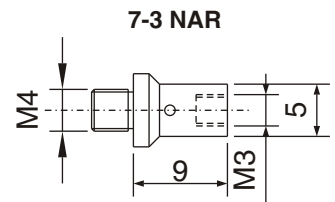
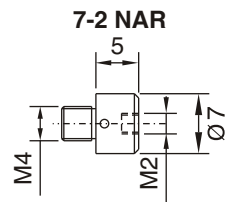
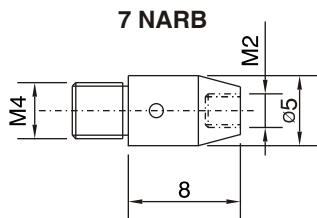
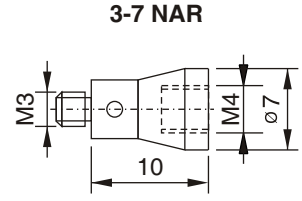
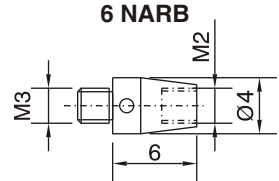
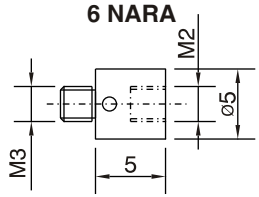
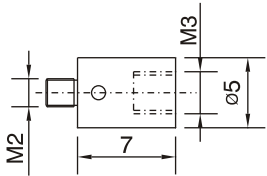


# ADAPTORS

Adaptors for probe and styli	Order No.	Suitable for probe	Material	wt
Adaptors for Renishaw	25-3 NAR	M2 / M3	Steel	1.0g
	6 NARA	M3 / M2	Steel	0.8g
	6 NARB	M3 / M2	Steel	0.8g
	3-7 NAR	M3 / M4	Steel	1.6g
	7 NARB	M4 / M2	Steel	1.1g
	7-2 NAR	M4 / M2	Steel	1.4g
	7-3 NAR	M4 / M3	Steel	1.1g



Adaptors for M5 Thread (Zeiss / Leitz)	Order No.	Suitable for probe	Material	wt
	11-2 NAZ	M5 / M2	Steel	3.1g
	11-3 NAZ	M5 / M3	Steel	3.2g
	11-4 NAZ	M5 / M4	Steel	3.2g
	5-2 NAZ	M5 / M2	Steel	5.7g
	5-3 NAZ	M5 / M3	Steel	5.7g
	5-4 NAZ	M5 / M4	Steel	5.7g
	12-2 NAL	M5 / M2	Steel	3.1g
	12-3 NAL	M5 / M3	Steel	3.2g
	12-4 NAL	M5 / M4	Steel	3.2g

