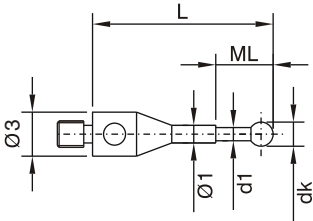


M2

M2 Thread Styli	Order No.	Shaft	Ball	wt	dk mm	d1 mm	L mm	ML mm
Styli (Type A)	0.2-10-2 NTA	TC	Ruby	0.3g	0.2	0.15	10.0	1.5
	0.25-10-2 NTA	TC	Ruby	0.3g	0.25	0.2	10.0	2.5
	0.3-10-2 NTA	TC	Ruby	0.3g	0.3	0.2	10.0	2.5
	0.4-10-2 NTA	TC	Ruby	0.3g	0.4	0.3	10.0	2.5
	0.5-10-2 NTA	TC	Ruby	0.3g	0.5	0.3	10.0	2.5
	0.6-10-2 NTA	TC	Ruby	0.3g	0.6	0.4	10.0	2.5
	0.6-12-2 NTA	TC	Ruby	0.3g	0.6	0.4	12.0	4.5
	0.7-10-2 NTA	TC	Ruby	0.3g	0.7	0.4	10.0	2.5
	0.7-12-2 NTA	TC	Ruby	0.3g	0.7	0.4	12.0	4.5
	0.8-10-2 NTA	TC	Ruby	0.3g	0.8	0.6	10.0	2.5
	0.8-12-2 NTA	TC	Ruby	0.3g	0.8	0.6	12.0	4.5
	0.9-10-2 NTA	TC	Ruby	0.3g	0.9	0.6	10.0	2.5
	0.9-12-2 NTA	TC	Ruby	0.3g	0.9	0.6	12.0	4.5
	1.0-10-2 NTA	TC	Ruby	0.3g	1.0	0.8	10.0	2.5
	1.0-12-2 NTA	TC	Ruby	0.3g	1.0	0.8	12.0	4.5



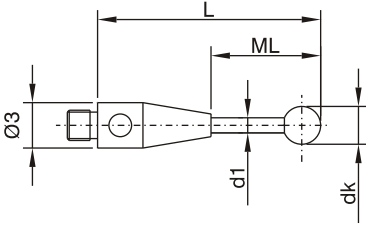
Styli (Type B)	Order No.	Shaft	Ball	wt	dk mm	d1 mm	L mm	ML mm
Styli (Type B)	0.7-20-2 NTB	TC	Ruby	0.5g	0.7	0.5	20.0	12.0
	1.0-10.5-2 NTB	TC	Ruby	0.3g	1.0	0.7	10.5	5.5
	1.0-15.5-2 NTB	TC	Ruby	0.3g	1.0	0.7	15.5	10.5
	1.0-20.5-2 NTB	TC	Ruby	0.3g	1.0	0.7	20.5	15.5
	1.0-27.5-2 NTB	TC	Ruby	0.4g	1.0	0.7	27.5	20.5
	1.0-30.5-2 NTB	TC	Ruby	0.4g	1.0	0.7	30.5	23.5
	1.5-11-2 NTB	TC	Ruby	0.3g	1.5	0.7	11.0	6.0
	1.5-16-2 NTB	TC	Ruby	0.3g	1.5	0.7	16.0	11.0
	1.5-21-2 NTB	TC	Ruby	0.3g	1.5	0.7	21.0	16.0
	1.5-31-2 NTB	TC	Ruby	0.3g	1.5	0.7	31.0	24.0
	2.0-11-2 NTB	TC	Ruby	0.4g	2.0	1.0	11.0	6.0
	2.0-16-2 NTB	TC	Ruby	0.4g	2.0	1.0	16.0	9.0
	2.0-21-2 NTB	TC	Ruby	0.4g	2.0	1.0	21.0	14.0
	2.0-26-2 NTB	TC	Ruby	0.5g	2.0	1.0	26.0	19.0
	2.0-31-2 NTB	TC	Ruby	0.5g	2.0	1.0	31.0	24.0
	2.0-36-2 NTB	TC	Ruby	0.6g	2.0	1.0	36.0	29.0
	2.0-41-2 NTB	TC	Ruby	0.6g	2.0	1.0	41.0	34.0
	2.5-11-2 NTB	TC	Ruby	0.3g	2.5	1.0	11.0	4.0
	2.5-16-2 NTB	TC	Ruby	0.4g	2.5	1.0	16.0	9.0
	2.5-21-2 NTB	TC	Ruby	0.4g	2.5	1.0	21.0	14.0
	2.5-31-2 NTB	TC	Ruby	1.0g	2.5	1.5	31.0	24.0
	2.5-41-2 NTB	TC	Ruby	1.2g	2.5	1.5	41.0	34.0
	3.0-11.5-2 NTB	TC	Ruby	0.7g	3.0	1.5	11.5	6.5
	3.0-21.5-2 NTB	TC	Ruby	0.9g	3.0	1.5	21.5	14.5
	3.0-31.5-2 NTB	TC	Ruby	1.1g	3.0	1.5	31.5	24.5
	3.0-36.5-2 NTB	TC	Ruby	1.2g	3.0	1.5	36.5	29.5
	3.0-41.5-2 NTB	TC	Ruby	1.3g	3.0	1.5	41.5	31.5
	3.0-46.5-2 NTB	TC	Ruby	1.5g	3.0	1.5	46.5	36.5
	3.0-51.5-2 NTB	TC	Ruby	1.6g	3.0	1.5	51.5	41.5

TC = Tungsten Carbide

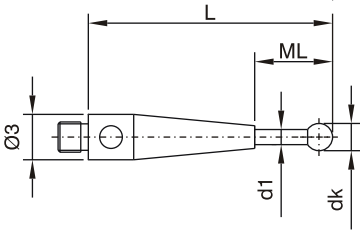
Styli Type B Contd. Page 5

M2

M2 Thread Styli	Order No.	Shaft	Ball	wt	dk mm	d1 mm	L mm	ML mm
Styli (Type B)	4.0-22-2 NTB	TC	Ruby	1.1g	4.0	2.0	22.0	12.0
	4.0-32-2 NTB	TC	Ruby	1.6g	4.0	2.0	32.0	22.0
	4.0-37-2 NTB	TC	Ruby	1.8g	4.0	2.0	37.0	27.0
	4.0-42-2 NTB	TC	Ruby	2.1g	4.0	2.0	42.0	32.0
	4.0-47-2 NTB	TC	Ruby	2.3g	4.0	2.0	47.0	37.0
	4.0-52-2 NTB	TC	Ruby	2.5g	4.0	2.0	52.0	42.0
	5.0-22.5-2 NTB	TC	Ruby	1.3g	5.0	2.0	22.5	12.5
	5.0-32.5-2 NTB	TC	Ruby	1.7g	5.0	2.0	32.5	22.5
	5.0-37.5-2 NTB	TC	Ruby	2.0g	5.0	2.0	37.5	27.5
	5.0-42.5-2 NTB	TC	Ruby	2.2g	5.0	2.0	42.5	32.5
	5.0-47.5-2 NTB	TC	Ruby	2.4g	5.0	2.0	47.5	37.5
	5.0-52.5-2 NTB	TC	Ruby	2.6g	5.0	2.0	52.5	42.5
	6.0-33-2 NTB	TC	Ruby	1.9g	6.0	2.0	33.0	23.0
	6.0-38-2 NTB	TC	Ruby	2.1g	6.0	2.0	38.0	28.0
	6.0-43-2 NTB	TC	Ruby	2.4g	6.0	2.0	43.0	33.0
	6.0-48-2 NTB	TC	Ruby	2.6g	6.0	2.0	48.0	38.0
	6.0-53-2 NTB	TC	Ruby	2.8g	6.0	2.0	53.0	43.0

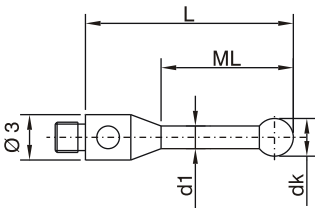


Styli (Type BS)	Order No.	Shaft	Ball	wt	dk mm	d1 mm	L mm	ML mm
Styli (Type BS)	0.5-20-2 NTBS	TC	Ruby	0.5g	0.5	0.3	20.0	7.0
	0.5-21-2 NTBS	TC	Ruby	0.6g	0.5	0.3	21.0	2.5
	1.0-20.5-2 NTBS	TC	Ruby	0.6g	1.0	0.7	20.5	6.5
	1.5-21-2 NTBS	TC	Ruby	0.6g	1.5	0.7	21.0	7.0
	2.0-21-2 NTBS	TC	Ruby	0.7g	2.0	1.0	21.0	7.0

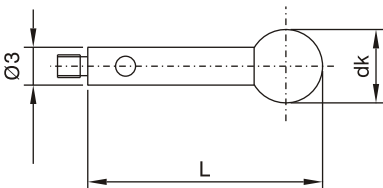


TC = Tungsten Carbide

Styli (Type C)	Order No.	Shaft	Ball	wt	dk mm	d1 mm	L mm	ML mm
Styli (Type C)	1.0-10.5-2 NTC	Steel	Ruby	0.3g	1.0	0.7	10.5	5.0
	1.5-11-2 NTC	Steel	Ruby	0.3g	1.5	1.0	11.0	6.0
	2.0-11-2 NTC	Steel	Ruby	0.3g	2.0	1.2	11.0	7.0
	2.0-16-2 NTC	Steel	Ruby	0.3g	2.0	1.2	16.0	12.0
	2.0-21-2 NTC	Steel	Ruby	0.3g	2.0	1.4	21.0	15.0
	2.5-11-2 NTC	Steel	Ruby	0.3g	2.5	1.5	11.0	7.0
	2.5-21-2 NTC	Steel	Ruby	0.4g	2.5	1.5	21.0	17.0
	3.0-11.5-2 NTC	Steel	Ruby	0.4g	3.0	2.0	11.5	8.0
	3.0-21.5-2 NTC	Steel	Ruby	0.6g	3.0	2.0	21.5	18.0
	4.0-12-2 NTC	Steel	Ruby	0.5g	4.0	2.4	12.0	9.0
	4.0-22-2 NTC	Steel	Ruby	0.9g	4.0	2.4	22.0	19.0



Styli (Type D)	Order No.	Shaft	Ball	wt	dk mm	L mm
Styli (Type D)	5.0-12.5-2 NTD	Steel	Ruby	0.7g	5.0	12.5
	5.0-27.5-2 NTD	Steel	Ruby	1.6g	5.0	27.5
	6.0-13-2 NTD	Steel	Ruby	0.9g	6.0	13.0
	6.0-28-2 NTD	Steel	Ruby	1.7g	6.0	28.0
	8.0-14-2 NTD	Steel	Ruby	1.3g	8.0	14.0
	8.0-29-2 NTD	Steel	Ruby	1.9g	8.0	29.0



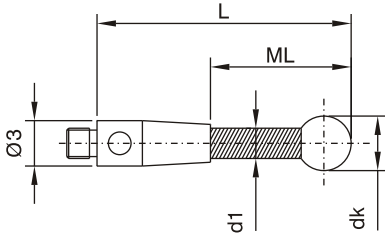
INDO SERVICES

TEL : +91 80 23406723, +91 80 23377556, MOBILE : +91 94482 89260, +91 94482 89262, E-mail : info@indoservices.net

M2

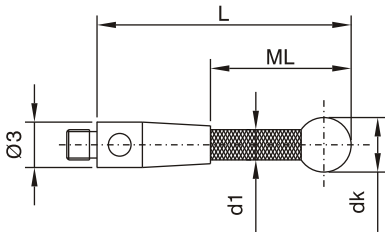
M2 Thread Styli

Styli (Type K), Ceramic



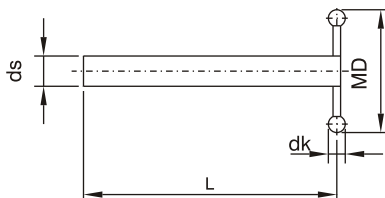
Order No.	Shaft	Ball	wt	dk mm	d1 mm	L mm	ML mm
3.0-31.5-2 NTKE	Ceramic	Ruby	0.7g	3.0	2.0	31.5	21.5
3.0-51.5-2 NTKE	Ceramic	Ruby	0.9g	3.0	2.0	51.5	41.5
4.0-32-2 NTKE	Ceramic	Ruby	1.4g	4.0	2.0	32.0	22.0
4.0-42-2 NTKE	Ceramic	Ruby	1.5g	4.0	2.0	42.0	32.0
4.0-52-2 NTKE	Ceramic	Ruby	1.6g	4.0	2.0	52.0	42.0
5.0-32.5-2 NTKE	Ceramic	Ruby	1.5g	5.0	2.0	32.5	22.5
5.0-42.5-2 NTKE	Ceramic	Ruby	1.6g	5.0	2.0	42.5	32.5
5.0-52.5-2 NTKE	Ceramic	Ruby	1.6g	5.0	2.0	52.5	42.5
6.0-13-2 NTKE	Ceramic	Ruby	1.4g	6.0	2.0	13.0	7.0
6.0-33-2 NTKE	Ceramic	Ruby	1.6g	6.0	2.0	33.0	23.0
6.0-43-2 NTKE	Ceramic	Ruby	1.8g	6.0	2.0	43.0	33.0
6.0-53-2 NTKE	Ceramic	Ruby	1.8g	6.0	2.0	53.0	43.0

Styli (Type), Carbon Fiber



Order No.	Shaft	Ball	wt	dk mm	d1 mm	L mm	ML mm
3.0-31.5-2 NTCA	Carbon Fiber	Ruby	0.5g	3.0	2.0	31.5	21.5
3.0-51.5-2 NTCA	Carbon Fiber	Ruby	0.6g	3.0	2.0	51.5	41.5
4.0-32-2 NTCA	Carbon Fiber	Ruby	0.6g	4.0	3.0	32.0	21.0
4.0-42-2 NTCA	Carbon Fiber	Ruby	0.7g	4.0	3.0	42.0	31.0
4.0-52-2 NTCA	Carbon Fiber	Ruby	0.7g	4.0	3.0	52.0	41.0
4.0-77-2 NTCA	Carbon Fiber	Ruby	1.0g	4.0	3.0	77.0	66.0
4.0-102-2 NTCA	Carbon Fiber	Ruby	1.3g	4.0	3.0	102.0	91.0
5.0-32.5-2 NTCA	Carbon Fiber	Ruby	0.7g	5.0	3.0	32.5	21.5
5.0-42.5-2 NTCA	Carbon Fiber	Ruby	0.7g	5.0	3.0	42.5	31.5
5.0-52.5-2 NTCA	Carbon Fiber	Ruby	0.9g	5.0	3.0	52.5	41.5
5.0-77.5-2 NTCA	Carbon Fiber	Ruby	1.2g	5.0	3.0	77.5	66.5
5.0-102.5-2 NTCA	Carbon Fiber	Ruby	1.4g	5.0	3.0	102.5	91.5
6.0-33-2 NTCA	Carbon Fiber	Ruby	0.9g	6.0	3.0	33.0	22.0
6.0-43-2 NTCA	Carbon Fiber	Ruby	1.0g	6.0	3.0	43.0	32.0
6.0-53-2 NTCA	Carbon Fiber	Ruby	1.0g	6.0	3.0	53.0	42.0
6.0-78-2 NTCA	Carbon Fiber	Ruby	1.3g	6.0	3.0	78.0	67.0
6.0-103-2 NTCA	Carbon Fiber	Ruby	1.6g	6.0	3.0	103.0	92.0

T-Styli (Type H)



Order No.	Shaft	Ball	wt	dk mm	ds mm	MD mm	L mm
1.0-50-2 NTTH	TC	Ruby	3g	1.0	2.0	10.0	50.0
1.0-100-2 NTTH	TC	Ruby	5g	1.0	2.0	10.0	100.0
2.0-50-2 NTTH	TC	Ruby	3g	2.0	2.0	20.0	50.0
2.0-100-2 NTTH	TC	Ruby	5g	2.0	2.0	20.0	100.0

For use with **Adaptors for styli** (Page 15, 28, 37).

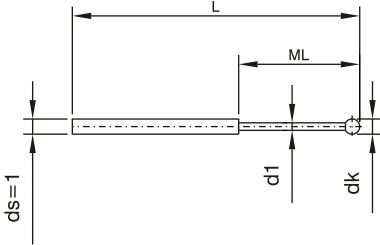
TC = Tungsten Carbide

INDO SERVICES

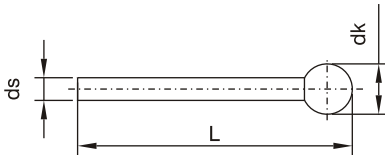
TEL : +91 80 23406723, +91 80 23377556, MOBILE : +91 94482 89260, +91 94482 89262, E-mail : info@indoservices.net

M2

M2 Thread Styli	Order No.	Shaft	Ball	wt	dk mm	d1 mm	L mm	ML mm
Styli (Type F)	0.13-15.1-1 NTF	TC	TC	0.2g	0.13	0.08	15.1	1.0
	0.2-15.2-1 NTF	TC	Ruby	0.2g	0.2	0.15	15.2	1.5
	0.25-15.3-1 NTF	TC	Ruby	0.2g	0.25	0.2	15.3	2.5
	0.3-15.3-1 NTF	TC	Ruby	0.2g	0.3	0.2	15.3	2.5
	0.4-15.4-1 NTF	TC	Ruby	0.2g	0.4	0.3	15.4	2.5
	0.5-15.5-1 NTF	TC	Ruby	0.2g	0.5	0.3	15.5	2.5
	0.6-15.6-1 NTF	TC	Ruby	0.3g	0.6	0.4	15.6	4.5
	0.7-15.7-1 NTF	TC	Ruby	0.3g	0.7	0.4	15.7	4.5
	0.8-15.8-1 NTF	TC	Ruby	0.3g	0.8	0.6	15.8	4.5
	0.9-15.9-1 NTF	TC	Ruby	0.3g	0.9	0.6	15.9	4.5
1.0-16-1 NTF	TC	Ruby	0.4g	1.0	0.8	16.0	4.5	



Styli (Type N)	Order No.	Shaft	Ball	wt	dk mm	ds mm	L mm
Styli (Type N)	1.35-26.4-1 NTN	TC	Ruby	0.3g	1.35	1.0	26.4
	1.5-26.5-1 NTN	TC	Ruby	0.3g	1.5	1.0	26.5
	2.0-26-1 NTN	TC	Ruby	0.3g	2.0	1.0	26.0
	2.0-27-1.5 NTN	TC	Ruby	0.6g	2.0	1.5	27.0
	2.0-45-1 NTN	TC	Ruby	0.5g	2.0	1.0	45.0
	2.0-61-1 NTN	TC	Ruby	0.7g	2.0	1.0	61.0
	2.0-81-1 NTN	TC	Ruby	1.0g	2.0	1.0	81.0
	2.0-101-1 NTN	TC	Ruby	1.3g	2.0	1.0	101.0
	2.5-27.5-1.5 NTN	TC	Ruby	0.6g	2.5	1.5	27.5
	3.0-26.5-1.5 NTN	TC	Ruby	0.7g	3.0	1.5	26.5
	3.0-38-2 NTN	TC	Ruby	2.0g	3.0	2.0	38.0
	3.0-45-1.5 NTN	TC	Ruby	1.0g	3.0	1.5	45.0
	3.0-61.5-1.5 NTN	TC	Ruby	1.6g	3.0	1.5	61.5
	3.0-81.5-1.5 NTN	TC	Ruby	2.2g	3.0	1.5	81.5
	3.0-101.5-1.5 NTN	TC	Ruby	2.8g	3.0	1.5	101.5
	4.0-27-2 NTN	TC	Ruby	1.3g	4.0	2.0	27.0
	4.0-45-2 NTN	TC	Ruby	2.1g	4.0	2.0	45.0
	4.0-62-2 NTN	TC	Ruby	2.9g	4.0	2.0	62.0
	4.0-82-2 NTN	TC	Ruby	3.9g	4.0	2.0	82.0
	4.0-102-2 NTN	TC	Ruby	4.9g	4.0	2.0	102.0
	5.0-27.5-2 NTN	TC	Ruby	1.4g	5.0	2.0	27.5
	5.0-42.5-2 NTN	TC	Ruby	2.3g	5.0	2.0	42.5
	5.0-62.5-2 NTN	TC	Ruby	3.1g	5.0	2.0	62.5
	5.0-82.5-2 NTN	TC	Ruby	4.0g	5.0	2.0	82.5
	5.0-102.5-2 NTN	TC	Ruby	5.0g	5.0	2.0	102.5
	6.0-28-2 NTN	TC	Ruby	1.6g	6.0	2.0	28.0
	6.0-43-2 NTN	TC	Ruby	2.2g	6.0	2.0	43.0
	6.0-63-2 NTN	TC	Ruby	3.2g	6.0	2.0	63.0
	6.0-83-2 NTN	TC	Ruby	4.2g	6.0	2.0	83.0
	6.0-103-2 NTN	TC	Ruby	4.9g	6.0	2.0	103.0
	8.0-29-2 NTN	TC	Ruby	2.0g	8.0	2.0	29.0
	8.0-64-2 NTN	TC	Ruby	3.6g	8.0	2.0	64.0
	8.0-84-2 NTN	TC	Ruby	4.5g	8.0	2.0	84.0



All the above for use with **Adaptors for styli** (Page 15, 28, 37).

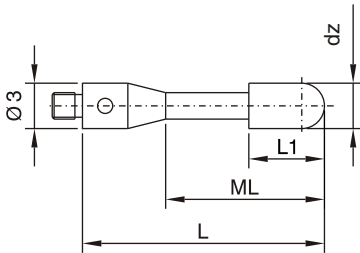
TC = Tungsten Carbide

INDO SERVICES

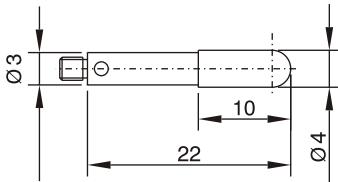
TEL : +91 80 23406723, +91 80 23377556, MOBILE : +91 94482 89260, +91 94482 89262, E-mail : info@indoservices.net

M2

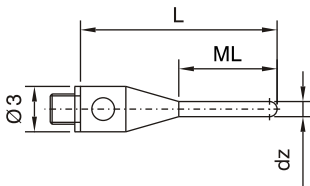
M2 Thread Styli	Order No.	Shaft	Cylinder	wt	dz mm	L1 mm	L mm	ML mm
Cylinder Styli (Type A)	2.0-16-2 NZRA	Steel	Ruby	0.4g	2.0	5.0	16.0	12.0
	2.0-21-2 NZRA	Steel	Ruby	0.4g	2.0	5.0	21.0	17.0
	3.0-22-2 NZRA	Steel	Ruby	0.6g	3.0	10.0	22.0	18.0



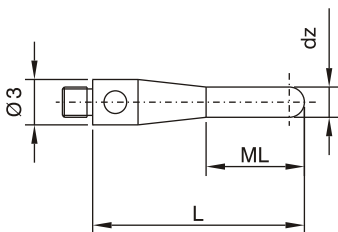
Cylinder Styli (Type B)	Order No.	Shaft	Cylinder	wt
	4.0-22-2 NZRB	Steel	Ruby	1.2g



Cylinder Styli (Type C)	Order No.	Cylinder	wt	dz mm	L mm	ML mm
	1.0-15-2 NZRC	Ruby	0.3g	1.0	15.0	8.0

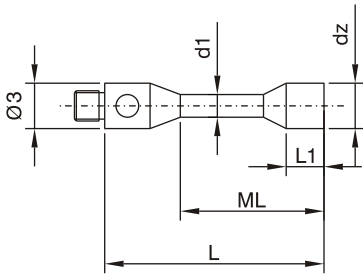


Cylinder Styli (Type D)	Order No.	Cylinder	wt	dz mm	L mm	ML mm
	0.3-10-2 NZHD	TC	0.3g	0.3	10.0	3.0
	0.5-15-2 NZHD	TC	0.3g	0.5	15.0	8.0
	1.0-20-2 NZHD	TC	0.4g	1.0	20.0	13.0
	1.0-35.5-2 NZHD	TC	0.4g	1.0	35.5	28.5
	1.0-40-2 NZHD	TC	0.7g	1.0	40.0	33.0
	1.5-15.8-2 NZHD	TC	0.7g	1.5	15.8	8.8
	1.5-20-2 NZHD	TC	0.8g	1.5	20.0	10.0
	1.5-40-2 NZHD	TC	1.3g	1.5	40.0	30.0
	2.0-16-2 NZHD	TC	0.6g	2.0	16.0	9.0
	2.0-20-2 NZHD	TC	0.7g	2.0	20.0	10.0
	2.0-40-2 NZHD	TC	1.3g	2.0	40.0	30.0
	3.0-22.5-2 NZHD	TC	2.0g	3.0	22.5	15.5
	1.0-20-2 NZSD	Steel	0.4g	1.0	20.0	13.0
	1.0-40-2 NZSD	Steel	0.7g	1.0	40.0	33.0
	1.5-20-2 NZSD	Steel	0.5g	1.5	20.0	10.0
	1.5-40-2 NZSD	Steel	1.0g	1.5	40.0	30.0
	2.0-20-2 NZSD	Steel	0.6g	2.0	20.0	10.0
	2.0-40-2 NZSD	Steel	1.2g	2.0	40.0	30.0

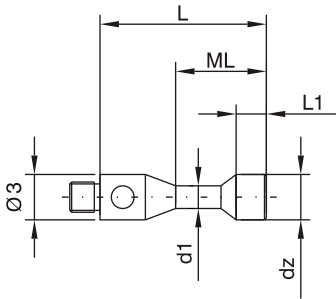


M2

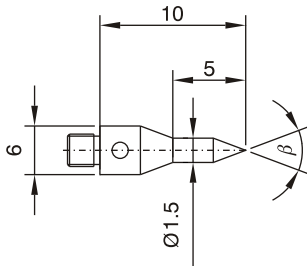
M2 Thread Styli	Order No.	Shaft / Cylinder	wt	dz mm	d1 mm	L mm	ML mm	L1 mm
Cylinder Styli (Type H)	1.5-14-2 NZTH	TC	0.4g	1.5	1.0	14.0	7.0	2.5
	2.0-16-2 NZTH	TC	0.5g	2.0	2.0	16.0	9.0	9.0
	3.0-16-2 NZTH	TC	0.6g	3.0	1.5	16.0	9.0	3.5



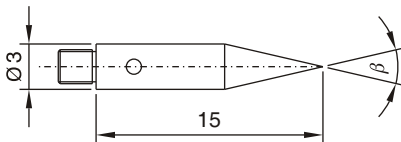
Cylinder Styli (Type S)	Order No.	Shaft / Cylinder	wt	dz mm	d1 mm	L mm	ML mm	L1 mm
Cylinder Styli (Type S)	1.5-11-2 NZTS	Steel	0.3g	1.5	1.0	11.0	4.0	1.5
	2.0-11-2 NZTS	Steel	0.3g	2.0	1.5	11.0	4.0	2.0
	2.5-13-2 NZTS	Steel	0.5g	2.5	1.7	13.0	5.5	2.5
	3.0-13-2 NZTS	Steel	0.5g	3.0	2.0	13.0	5.5	4.0



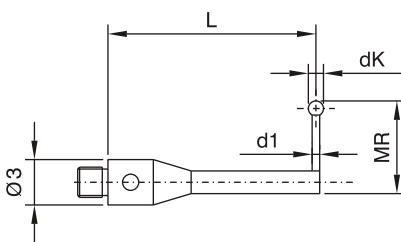
Pointed Styli	Order No.	Point	wt	β
Pointed Styli	30-10-2 NTS	TC	0.3g	30°



Pointed Styli	Order No.	Point	wt	β
Pointed Styli	30-15-2 NTS	Steel	0.6g	30°



L-Styli	Order No.	Shaft	Ball	wt	dk mm	d1 mm	MR mm	L mm
L-Styli	1.0-6-2 NLT	TC	Ruby	0.4g	1.0	0.6	6.0	15.0
	2.0-12-2 NLT	TC	Ruby	0.9g	2.0	1.0	12.0	20.0



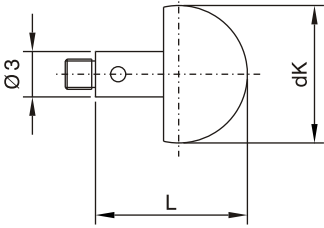
TC = Tungsten Carbide

INDO SERVICES

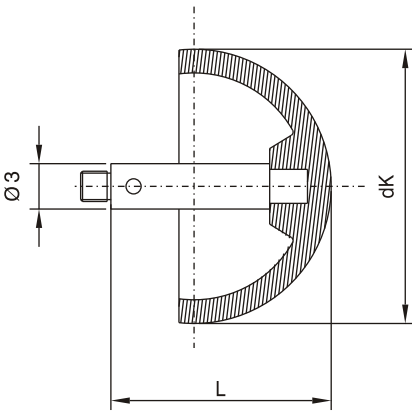
TEL : +91 80 23406723, +91 80 23377556, MOBILE : +91 94482 89260, +91 94482 89262, E-mail : info@indoservices.net

M2

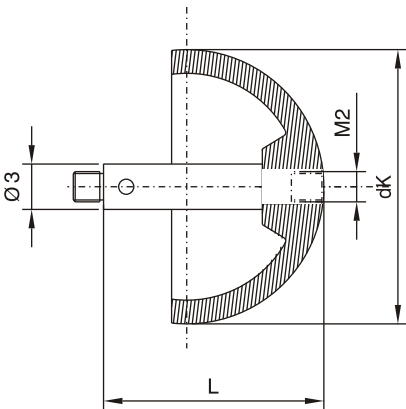
M2 Thread Styli	Order No.	Shaft	Ball	wt	dk mm	L mm
Ceramic Ball styli	8.0-10-2 NKK	Steel	Ceramic	1.2g	8.0	10.0
	10.0-11-2 NKK	Steel	Ceramic	1.7g	10.0	11.0



Hollow Ceramic Ball styli (Type E)	Order No.	Shaft	Ball	wt	dk mm	L mm
	18.0-16-2 NHKE	Steel	Ceramic	4.6g	18.0	16.0
	24.0-19-2 NHKE	Steel	Ceramic	8.9g	24.0	19.0
	30.0-22-2 NHKE	Steel	Ceramic	13.1g	30.0	22.0



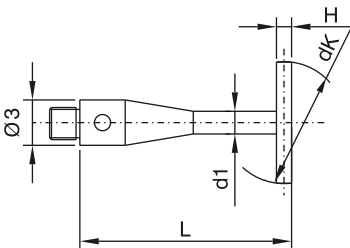
Hollow Ceramic Ball styli (Type Z)	Order No.	Shaft	Ball	wt	dk mm	L mm
	18.0-7-2 NHKZ	Steel	Ceramic	4.6g	18.0	16.0
	30.0-7-2 NHKZ	Steel	Ceramic	13.1g	30.0	22.0



M2 thread stylus may be used.



Ball Disc styli	Order No.	Shaft	Disc	wt	dk mm	d1 mm	L mm	H mm
	5.0-20-2 NKS	TC	Ceramic	0.7g	5.0	1.5	20.0	0.5
	10.0-25-2 NKS	TC	Ceramic	1.4g	10.0	2.0	25.0	0.8
	14.0-25-2 NKS	TC	Ceramic	1.8g	14.0	2.0	25.0	1.0



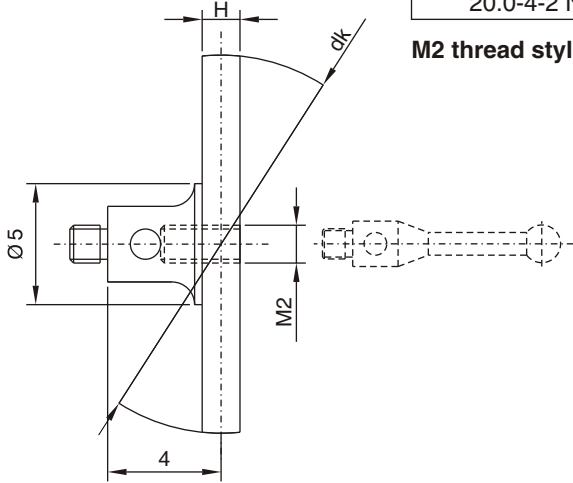
TC = Tungsten Carbide

INDO SERVICES

TEL : +91 80 23406723, +91 80 23377556, MOBILE : +91 94482 89260, +91 94482 89262, E-mail : info@indoservices.net

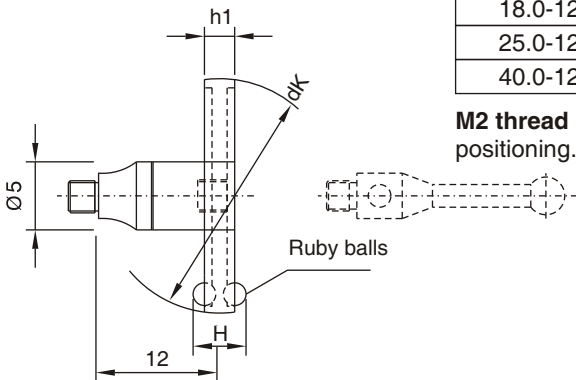
M2

M2 Thread Styli	Order No.	Shaft	Disc	wt	dk mm	H mm
Ball Disc styli	15.0-4-2 NKSE	Steel	Ceramic	0.9g	15.0	1.0
	20.0-4-2 NKSE	Steel	Ceramic	1.4g	20.0	1.0



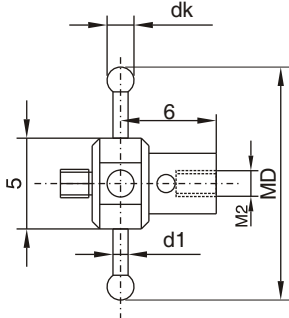
M2 thread stylus may be used.

Ball Disc styli rotary	Order No.	Shaft	Disc	wt	dk mm	H mm	h1 mm
	18.0-12-2 NKSD	Steel	Steel	2.8g	18.0	4.0	2.5
	25.0-12-2 NKSD	Steel	Steel	3.9g	25.0	4.0	2.5
	40.0-12-2 NKSD	Steel	Steel	11.0g	40.0	6.0	4.0



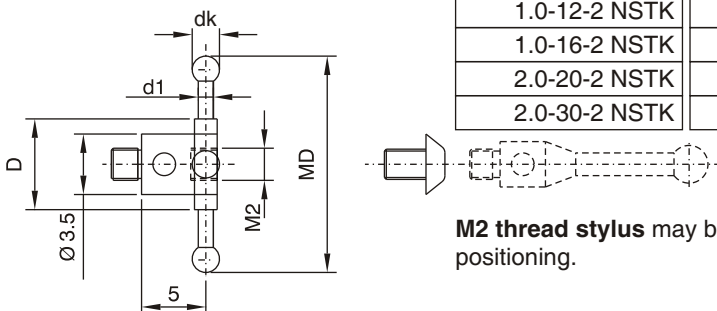
M2 thread stylus may be used. A built-in rotating adaptor allows stylus positioning.

Star styli rotary (Type F)	Order No.	Shaft	Ball	wt	dk mm	d1 mm	MD mm
	0.5-10.5-2 NSTF	TC	Ruby	0.9g	0.5	0.3	10.5
	0.5-20.5-2 NSTF	TC	Ruby	1.0g	0.5	0.3	20.5
	1.0-11-2 NSTF	TC	Ruby	1.2g	1.0	0.7	11.0
	1.0-21-2 NSTF	TC	Ruby	1.4g	1.0	0.7	21.0



M2 thread stylus may be used. A built-in rotating adaptor allows stylus positioning.

Star Styli Rotary (Type K)	Order No.	Shaft	Ball	wt	dk mm	d1 mm	MD mm	D mm
	1.0-12-2 NSTK	TC	Ruby	0.5g	1.0	0.6	12.0	6.0
	1.0-16-2 NSTK	TC	Ruby	0.6g	1.0	0.6	16.0	6.0
	2.0-20-2 NSTK	TC	Ruby	1.1g	2.0	1.0	20.0	8.0
	2.0-30-2 NSTK	TC	Ruby	1.2g	2.0	1.0	30.0	8.0



M2 thread stylus may be used. A built-in rotating adaptor allows stylus positioning.

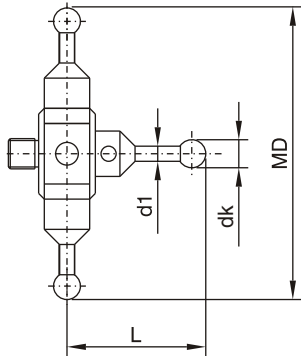
TC = Tungsten Carbide

INDO SERVICES

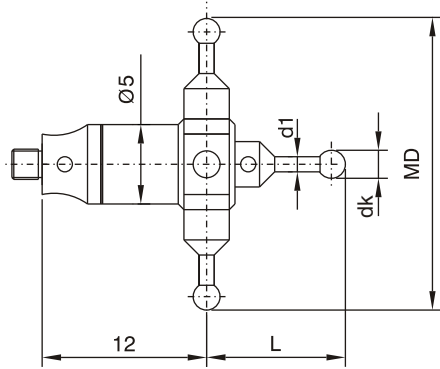
TEL : +91 80 23406723, +91 80 23377556, MOBILE : +91 94482 89260, +91 94482 89262, E-mail : info@indoservices.net

M2

M2 Thread Styli	Order No.	Shaft	Ball	wt	dk mm	d1 mm	MD mm	L mm
Star Styli (Type A, Type C)	2.0-28-2 NSTA	Steel	Ruby	2.2g	2.0	1.2	28.0	11.0
	2.0-28-2 NSTC	Steel	Ruby	2.5g	2.0	1.2	28.0	18.0
	2.0-38-2 NSTA	Steel	Ruby	2.2g	2.0	1.2	38.0	11.0
	2.0-38-2 NSTC	Steel	Ruby	2.6g	2.0	1.2	38.0	23.0

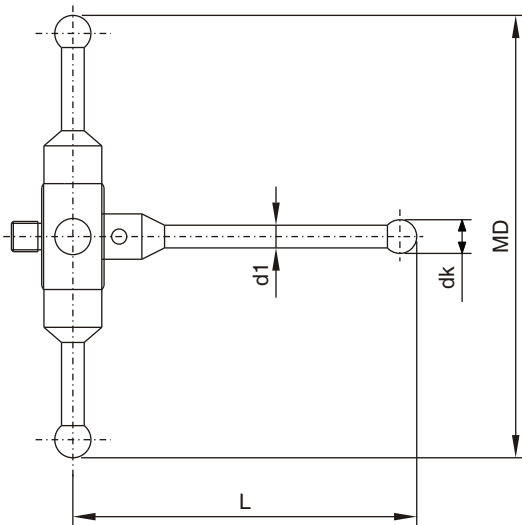


Star Styli rotary (Type B, Type D)	Order No.	Shaft	Ball	wt	dk mm	d1 mm	MD mm	L mm
	2.0-28-2 NSTB	Steel	Ruby	3.2g	2.0	1.2	28.0	11.0
	2.0-28-2 NSTD	Steel	Ruby	3.5g	2.0	1.2	28.0	18.0
	2.0-38-2 NSTB	Steel	Ruby	3.2g	2.0	1.2	38.0	11.0
	2.0-38-2 NSTD	Steel	Ruby	3.6g	2.0	1.2	38.0	23.0



A built-in rotating adaptor allows stylus positioning.

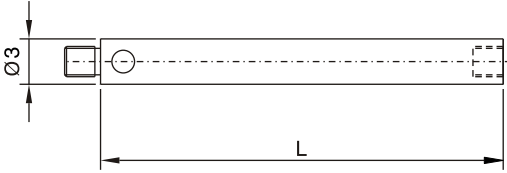
Star Styli Rotary (Type E)	Order No.	Shaft	Ball	wt	dk mm	d1 mm	MD mm	L mm
	2.0-22-2 NSTE	Steel	Ruby	2.2g	2.0	1.4	22.0	21.0
	2.0-32-2 NSTE	Steel	Ruby	2.5g	2.0	1.4	32.0	21.0



A built-in rotating adaptor allows stylus positioning.

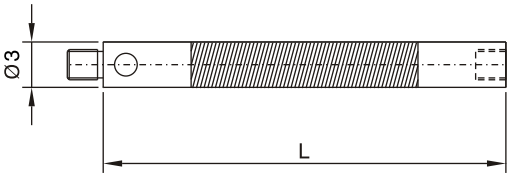
M2

M2 Thread Styli Extensions, Steel



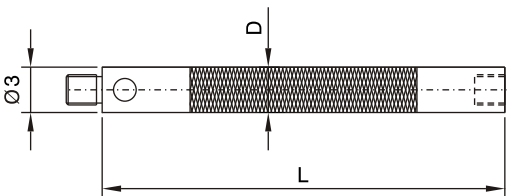
Order No.	Material	wt	L mm
5-2 NV	Steel	0.2g	5.0
10-2 NV	Steel	0.4g	10.0
20-2 NV	Steel	0.9g	20.0
30-2 NV	Steel	1.5g	30.0
40-2 NV	Steel	2.0g	40.0
50-2 NV	Steel	2.6g	50.0
60-2 NV	Steel	3.2g	60.0
70-2 NV	Steel	3.7g	70.0
80-2 NV	Steel	4.3g	80.0
90-2 NV	Steel	4.8g	90.0
100-2 NV	Steel	5.4g	100.0

Extensions, Light weight Ceramic



Order No.	Material	wt	L mm
30-2 NVK	Ceramic	1.3g	30.0
40-2 NVK	Ceramic	1.5g	40.0
50-2 NVK	Ceramic	1.6g	50.0
60-2 NVK	Ceramic	1.7g	60.0
70-2 NVK	Ceramic	2.0g	70.0
80-2 NVK	Ceramic	2.2g	80.0
90-2 NVK	Ceramic	2.4g	90.0
100-2 NVK	Ceramic	2.6g	100.0

Extensions, Light-weight Carbon Fiber

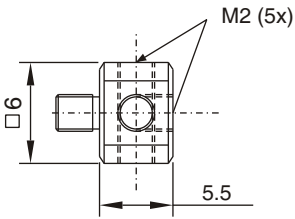


Order No.	Material	wt	L mm	D mm
30-2 NVCA	CF	0.7g	30.0	3.0
40-2 NVCA	CF	0.8g	40.0	3.0
50-2 NVCA	CF	0.9g	50.0	3.0
60-2 NVCA	CF	1.0g	60.0	3.0
70-2 NVCA	CF	1.1g	70.0	3.0
80-2 NVCA	CF	1.2g	80.0	4.0
90-2 NVCA	CF	1.3g	90.0	4.0
100-2 NVCA	CF	1.4g	100.0	4.0

CF = Carbon Fiber

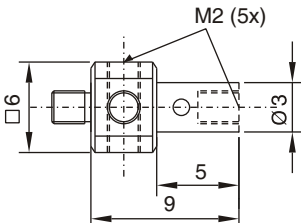
M2

M2 Thread Styli	Order No.	Material	wt
Adaptor for styli (Type D) 5-Way	6.0-5.5-2 NTHD	Steel	0.9g



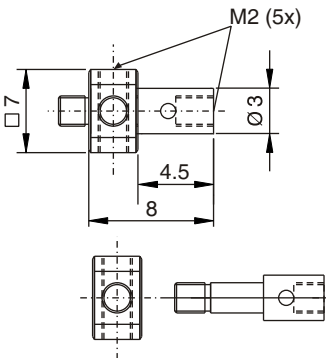
For use with **M2 thread styli**.

Adaptor for styli (Type A) 5-Way	Order No.	Material	wt
	6.0-9-2 NTHA	Steel	1.0g



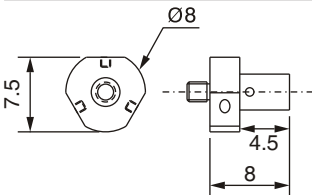
For use with **M2 thread styli**.

Adaptor for styli rotary (Type F) 5-Way	Order No.	Material	wt
	7.0-8-2 NTHF	Steel	1.0g



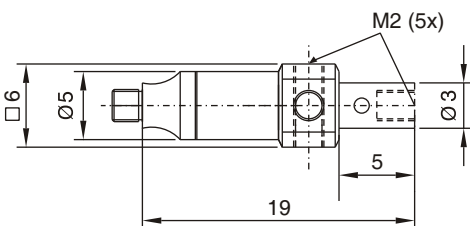
For use with **M2 thread styli**. A built-in rotating adaptor allows stylus positioning

Adaptor for styli rotary (Type G) 4-Way	Order No.	Material	wt
	7.5-8-2 NTHG	Steel	1.0g



For use with **M2 thread styli**. A built-in rotating adaptor allows stylus positioning

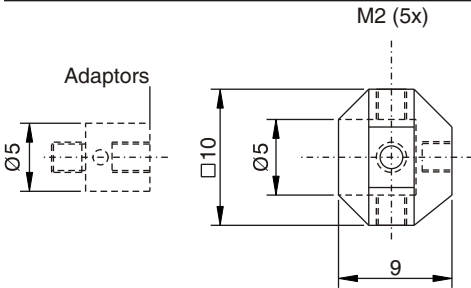
Adaptor for styli rotary (Type B) 5-Way	Order No.	Material	wt
	6.0-19-2 NTHB	Steel	2.0g



For use with **M2 thread styli**. A built-in rotating adaptor allows stylus positioning

M2

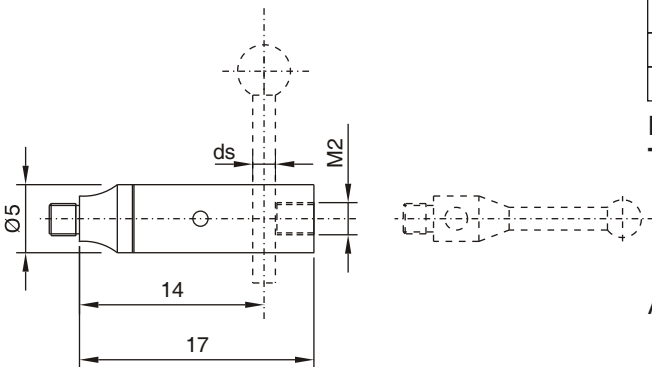
M2 Thread Styli	Order No.	Material	wt
Adaptor for styli rotary (Type C) 5-Way	10.0-9-2 NTHC	Steel	2.8g



For use with **M2 thread styli**. Adaptor allows stylus positioning

Use only **Adaptors** with $\varnothing 5\text{mm}$ (Page 2+3).

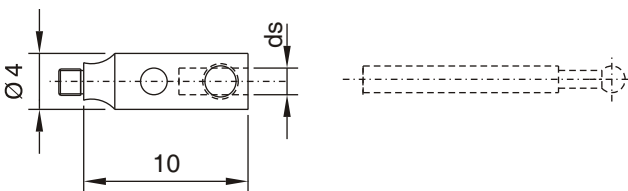
Adaptor for styli rotary (Type E)	Order No.	Material	wt	ds mm
	1.0-2 NHED	Steel	2.0g	1.0
	1.5-2 NHED	Steel	2.0g	1.5
	2.0-2 NHED	Steel	1.9g	2.0



For use with **Styli (Type F), (Type N)** (Page 7), **T-Styli (Type H)** (Page 6) and **M2 thread styli**.

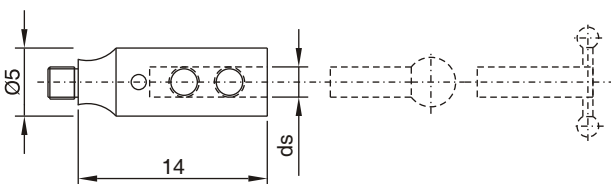
A built-in rotating adaptor allows stylus positioning.

Adaptor for styli (Type ZK)	Order No.	Material	wt	ds mm
	1.0-2 NHZK	Steel	0.8g	1.0



For use with **Styli (Type F), (Type N)** (Page 7), **T-Styli (Type H)** (Page 6).

Adaptor for styli (Type Z)	Order No.	Material	wt	ds mm
	1.0-2 NHZ	Steel	1.7g	1.0
	1.5-2 NHZ	Steel	1.7g	1.5
	2.0-2 NHZ	Steel	1.6g	2.0



For use with **Styli (Type F), (Type N)** (Page 7), **T-Styli (Type H)** (Page 6).

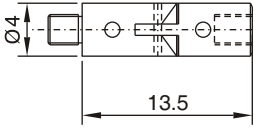
TC = Tungsten Carbide

INDO SERVICES

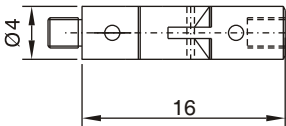
TEL : +91 80 23406723, +91 80 23377556, MOBILE : +91 94482 89260, +91 94482 89262, E-mail : info@indoservices.net

M2

M2 Thread Styli	Order No.	Material	wt
Knuckle joint (Type A)	4.0-13.5-2 NGA	Steel	1.1g

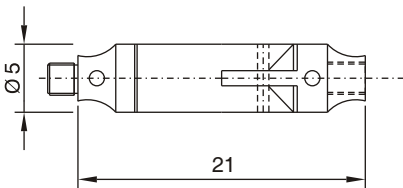


Knuckle joint rotary (Type B)	Order No.	Material	wt
	4.0-16-2 NGBD	Steel	1.4g



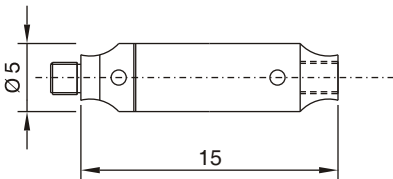
A built-in rotating adaptor allows stylus positioning.

Knuckle joint rotary (Type C)	Order No.	Material	wt
	5.0-21-2 NGCD	Steel	2.3g



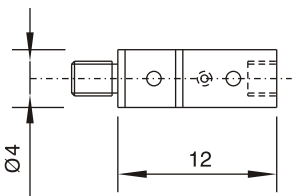
A built-in rotating adaptor allows stylus positioning.

Rotating adaptor	Order No.	Material	wt
	5.0-15-2 NDS	Steel	1.4g



Rotating adaptor allows stylus positioning.

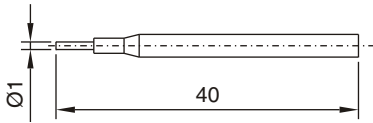
Rotating adaptor	Order No.	Material	wt
	4.0-12-2 NDS	Steel	1.0g



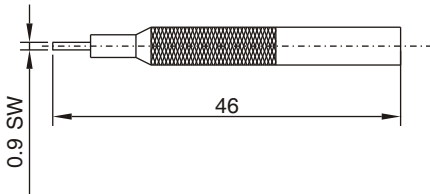
Rotating adaptor allows stylus positioning.

M2 TOOLS

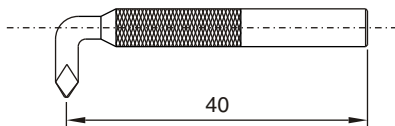
M2 Tools	Order No.	Description
Pin key	1.0 NWST	Ø1.0 mm for M2 thread components



Hexagon key	Order No.	Description
	0.9 NWSE	SW 0.9 mm



Cross-point key	Order No.	Description
	2.5 NWKR	2.5 mm



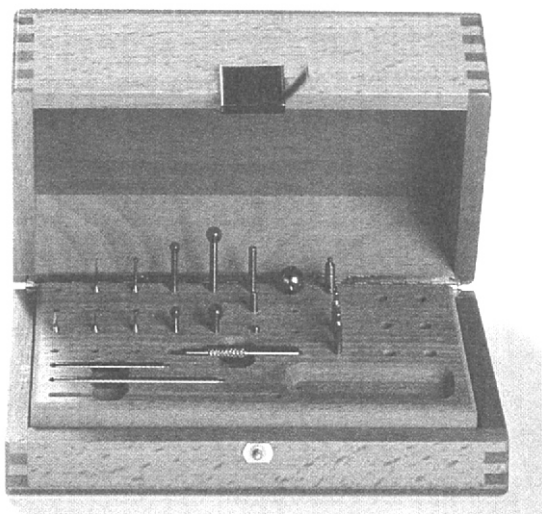
M2 SETS

M2 thread stylus sets	Order No.	Contents
M2 thread stylus set (Type A)	20-2 NTBA	20 parts

Styli and accessories are available in stylus sets. This small set is stocked with the most common styli and accessories needed to perform simple measurements successfully.

The empty spaces offer the possibility of enlarging your set at any time with the components needed for even the most specialized measurement requirements.

The sturdy wooden case protects your styli from dust or damage.



Supplied Equipment:			Drawing
1 Pc	Stylus	1.0-10.5-2 NTB	Page 4
1 Pc	Stylus	1.0-15.5-2 NTB	Page 4
1 Pc	Stylus	2.0-11-2 NTC	Page 5
1 Pc	Stylus	2.0-16-2 NTC	Page 5
1 Pc	Stylus	4.0-12-2 NTC	Page 5
1 Pc	Stylus	4.0-22-2 NTC	Page 5
1 Pc	Stylus	6.0-13-2 NTD	Page 5
1 Pc	Stylus	6.0-28-2 NTD	Page 5
1 Pc	Extension	5-2 NV	Page 13
1 Pc	Extension	10-2 NV	Page 13
1 Pc	Extension	20-2 NV	Page 13
1 Pc	Extension	40-2 NV	Page 13
1 Pc	Extension	60-2 NV	Page 13
1 Pc	Pointed stylus	30-10-2 NTS	Page 9
1 Pc	Knuckle joint rot.	4-16-2 NGBD	Page 16
1 Pc	Hexagon key	0.9 NWSE	Page 17
2 Pc	Pin key	1.0 NWST	Page 17
1 Pc	Cross-point key	2.5 NWKR	Page 17
1 Pc	Adaptor rotary	7.0-8-2 NTHF	Page 14

M2 SETS

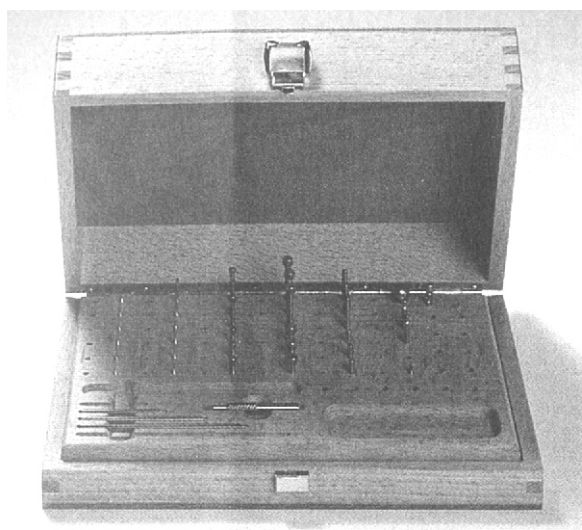
M2 thread stylus sets	Order No.	Contents
M2 thread stylus set (Type B)	40-2 NTBB	40 parts

Styli and accessories are available in stylus sets. This medium-sized set contains the most common styli and accessories needed to perform simple and complicated measurements successfully.

The empty spaces offer the possibility of enlarging your set at any time with the components needed to carry out even the most complicated measurement.

The sturdy wooden case protects your styli from dust or damage.

Supplied Equipment:			Drawing
3 Pc	Stylus	1.0-10.5-2 NTB	Page 4
3 Pc	Stylus	1.0-15.5-2 NTB	Page 4
3 Pc	Stylus	2.0-11-2 NTC	Page 5
3 Pc	Stylus	2.0-16-2 NTC	Page 5
3 Pc	Stylus	4.0-12-2 NTC	Page 5
3 Pc	Stylus	4.0-22-2 NTC	Page 5
3 Pc	Stylus	6.0-13-2 NTD	Page 5
3 Pc	Stylus	6.0-28-2 NTD	Page 5
3 Pc	Extension	10-2 NV	Page 13
3 Pc	Extension	20-2 NV	Page 13
1 Pc	Extension	40-2 NV	Page 13
1 Pc	Extension	60-2 NV	Page 13
1 Pc	Extension	80-2 NV	Page 13
1 Pc	Pointed stylus	30-10-2 NTS	Page 9
1 Pc	Knuckle joint rot.	4-16-2 NGBD	Page 16
1 Pc	Hexagon key	0.9 NWSE	Page 17
2 Pc	Pin key	1.0 NWST	Page 17
1 Pc	Cross-point key	2.5 NWKR	Page 17
1 Pc	Adaptor rotary	7.0-8-2 NTHF	Page 14



M2 SETS

M2 thread stylus sets	Order No.	Contents
M2 thread stylus set (Type C)	63-2 NTBC	63 parts

Styli and accessories are available in stylus sets. This medium-sized set contains the most common styli and accessories needed to perform simple and complicated measurements successfully.

The empty spaces offer the possibility of enlarging your set at any time with the components needed to carry out even the most complicated measurement.

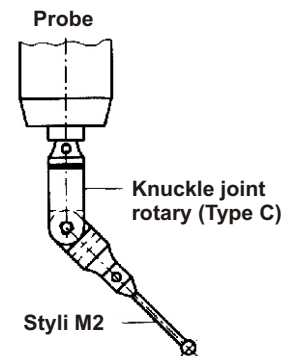
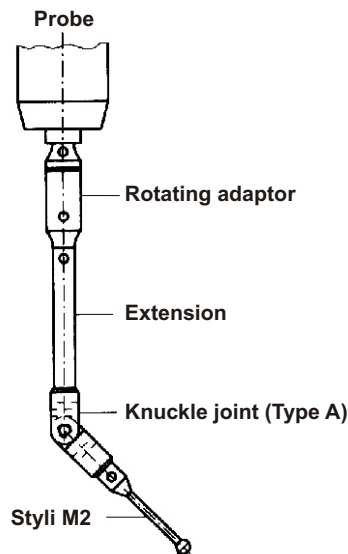
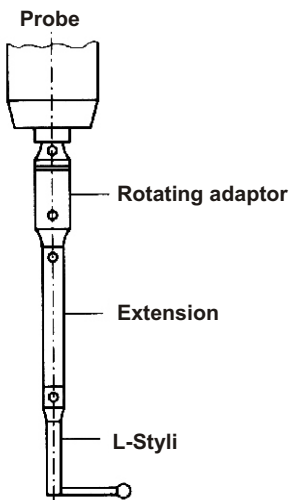
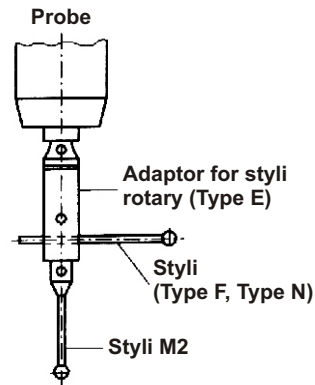
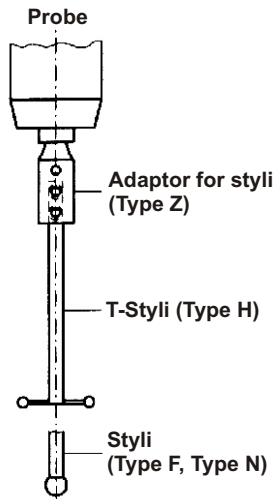
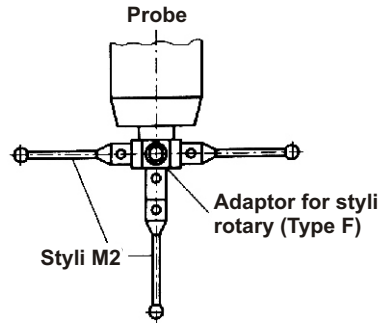
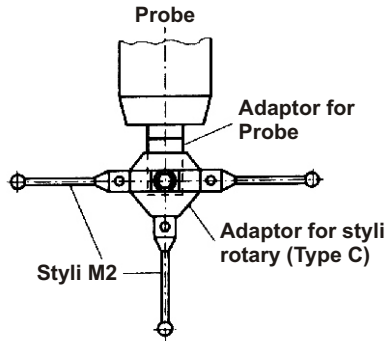
The sturdy wooden case protects your styli from dust or damage.



Supplied Equipment:			Drawing
1 Pc	Stylus	0.5-10-2 NTA	Page 4
4 Pc	Stylus	1.0-10.5-2 NTB	Page 4
4 Pc	Stylus	1.0-15.5-2 NTB	Page 4
1 Pc	Stylus	1.5-16-2 NTB	Page 4
1 Pc	Stylus	2.5-21-2 NTB	Page 4
4 Pc	Stylus	2.0-11-2 NTC	Page 5
4 Pc	Stylus	2.0-16-2 NTC	Page 5
1 Pc	Stylus	3.0-21.5-2 NTC	Page 5
4 Pc	Stylus	4.0-12-2 NTC	Page 5
4 Pc	Stylus	4.0-22-2 NTC	Page 5
1 Pc	Stylus	5.0-27.5-2 NTD	Page 5
4 Pc	Stylus	6.0-13-2 NTD	Page 5
4 Pc	Stylus	6.0-28-2 NTD	Page 5
1 Pc	Cylinder styli	4.0-22-2 NZRB	Page 8
1 Pc	Cylinder styli	1.5-14-2 NZTH	Page 9
1 Pc	Ball disc styli	10.0-25-2 NKSK	Page 10
1 Pc	Ball disc styli	25.0-12-2 NKSD	Page 11
1 Pc	Star styli	1.0-12-2 NSTK	Page 11
1 Pc	Star styli	2.0-28-2 NSTB	Page 12
4 Pc	Extension	10-2 NV	Page 13
4 Pc	Extension	20-2 NV	Page 13
1 Pc	Extension	30-2 NV	Page 13
1 Pc	Extension	40-2 NV	Page 13
1 Pc	Extension	60-2 NV	Page 13
1 Pc	Extension	80-2 NV	Page 13
1 Pc	Extension	100-2 NV	Page 13
1 Pc	Pointed stylus	30-10-2 NTS	Page 9
1 Pc	Adaptor rotary	6.0-19-2 NTHB	Page 14
1 Pc	Knuckle joint rot.	5.0-21-2 NGCD	Page 16
1 Pc	Rotating adaptor	5.0-15-2 NDS	Page 16
2 Pc	Pin key	1.0 NWST	Page 17
1 Pc	Cross-point key	2.5 NWKR	Page 17

M2 COMBINATIONS

Combinations for components with M2 thread



INDO SERVICES

TEL : +91 80 23406723, +91 80 23377556, MOBILE : +91 94482 89260, +91 94482 89262, E-mail : info@indoservices.net