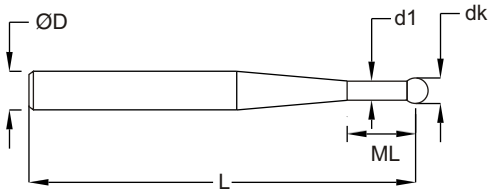


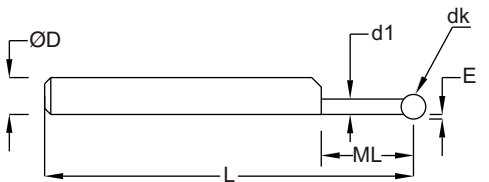
STYLI FOR HEIGHT GAUGES

(Compatible with Trimos, Mitutoyo & Mahr Height Gauge)

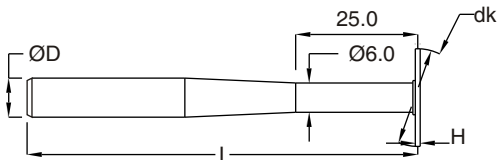
Styli for height gauges	Order No.	Shaft	Ball	ØD	dk mm	d1 mm	L mm	ML mm
Concentric Stylus	1.0-75-8 ITN	Steel	Ruby	8.0	1.0	0.7	75.0	1.5
	1.5-75-8 ITN	Steel	Ruby	8.0	1.5	0.9	75.0	2.2
	2.0-75-8 ITN	Steel	Ruby	8.0	2.0	1.4	75.0	4.0
	3.0-75-8 ITN	Steel	Ruby	8.0	3.0	2.0	75.0	6.0
	4.0-80-8 ITN	Steel	Ruby	8.0	4.0	3.0	80.0	11.0
	5.0-80-8 ITN	Steel	Ruby	8.0	5.0	4.0	80.0	16.0
10.0-80-8 ITN	Steel	Ruby	8.0	10.0	6.0	80.0	25.0	



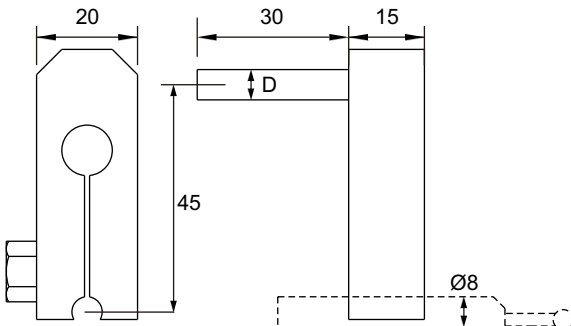
Eccentric Stylus	Order No.	Shaft	Ball	ØD	dk mm	d1 mm	L mm	ML mm	E mm
Eccentric Stylus	2.0-51-8 ITNE	Steel	Ruby	8.0	2.0	1.0	51.0	6.0	0.3
	3.0-55-8 ITNE	Steel	Ruby	8.0	3.0	1.5	55.0	10.0	0.55
	4.0-60-8 ITNE	Steel	Ruby	8.0	4.0	2.5	60.0	15.0	0.55



Disc Stylus	Order No.	Shaft	Disc	ØD	dk mm	L mm	H mm
Disc Stylus	14.0-80-8 IDC	Steel	Steel	8.0	14.0	80.0	0.8
	20.0-80-8 IDC	Steel	Steel	8.0	20.0	80.0	1.0



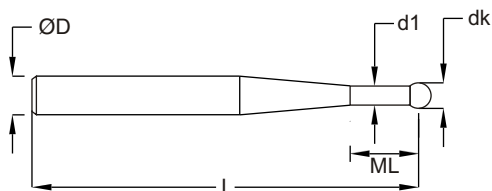
Adaptor for Eccentric Stylus	Order No.	Shaft	ØD
Adaptor for Eccentric Stylus	8.0-45-8 ITNEA	Steel	8.0



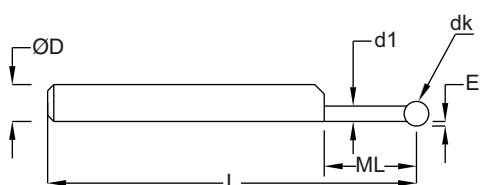
STYLI FOR HEIGHT GAUGES

(Compatible with "Tesa" Height Gauge)

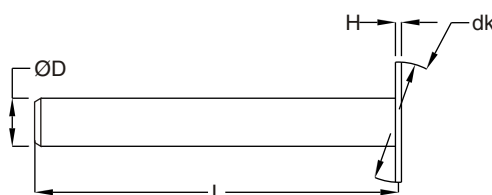
Styli for height gauges	Order No.	Shaft	Ball	ØD	dk mm	d1 mm	L mm	ML mm
Concentric Stylus	1.0-55-6 ITN	Steel	Ruby	6.0	1.0	0.7	55.0	1.5
	1.5-55-6 ITN	Steel	Ruby	6.0	1.5	0.9	55.0	2.2
	2.0-55-6 ITN	Steel	Ruby	6.0	2.0	1.4	55.0	4.0
	3.0-55-6 ITN	Steel	Ruby	6.0	3.0	2.0	55.0	6.0
	4.0-60-6 ITN	Steel	Ruby	6.0	4.0	3.0	60.0	11.0
	10.0-60-6 ITN	Steel	Ruby	6.0	8.0		60.0	30.0



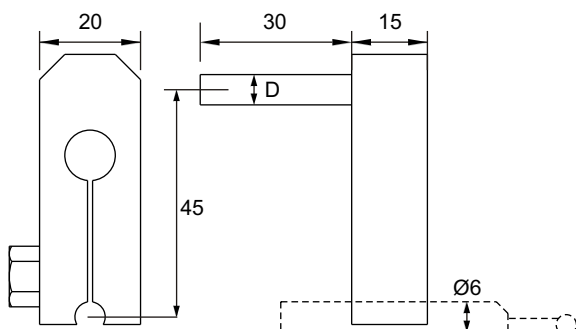
Eccentric Stylus	Order No.	Shaft	Ball	ØD	dk mm	d1 mm	L mm	ML mm	E mm
Eccentric Stylus	2.0-51-6 ITNE	Steel	Ruby	6.0	2.0	1.0	51.0	6.0	0.3
	3.0-55-6 ITNE	Steel	Ruby	6.0	3.0	1.5	55.0	10.0	0.55
	4.0-60-6 ITNE	Steel	Ruby	6.0	4.0	2.5	60.0	15.0	0.55



Disc Stylus	Order No.	Shaft	Disc	ØD	dk mm	L mm	H mm
Disc Stylus	14.0-60-6 IDC	Steel	Steel	6.0	14.0	60.0	0.8
	20.0-60-6 IDC	Steel	Steel	6.0	20.0	60.0	1.0

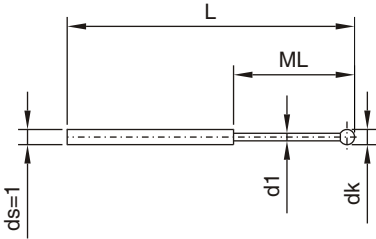


Adaptor for Eccentric Stylus	Order No.	Shaft	ØD
	6.0-45-6 ITNEA	Steel	6.0

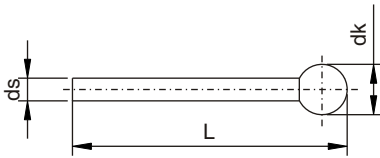


STYLI FOR HEIGHT GAUGES

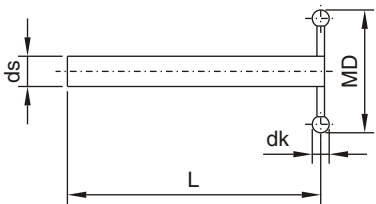
Styli for height gauges	Order No.	Shaft	Ball	wt	dk mm	d1 mm	L mm	ML mm
Styli (Type F)	0.2-15.2-1 NTF	TC	Ruby	0.2g	0.2	0.15	15.2	1.5
	0.25-15.3-1 NTF	TC	Ruby	0.2g	0.25	0.2	15.3	2.5
	0.3-15.3-1 NTF	TC	Ruby	0.2g	0.3	0.2	15.3	2.5
	0.4-15.4-1 NTF	TC	Ruby	0.2g	0.4	0.3	15.4	2.5
	0.5-15.5-1 NTF	TC	Ruby	0.2g	0.5	0.3	15.5	2.5
	0.6-15.6-1 NTF	TC	Ruby	0.3g	0.6	0.4	15.6	4.5
	0.7-15.7-1 NTF	TC	Ruby	0.3g	0.7	0.4	15.7	4.5
	0.8-15.8-1 NTF	TC	Ruby	0.3g	0.8	0.6	15.8	4.5
	0.9-15.9-1 NTF	TC	Ruby	0.3g	0.9	0.6	15.9	4.5
	1.0-16.0-1 NTF	TC	Ruby	0.4g	1.0	0.8	16.0	4.5



Styli (Type N)	Order No.	Shaft	Ball	wt	dk mm	ds mm	L mm
Styli (Type N)	1.35-26.4-1 NTN	TC	Ruby	0.3g	1.35	1.0	26.4
	1.5-26.5-1 NTN	TC	Ruby	0.3g	1.5	1.0	26.5
	2.0-26-1 NTN	TC	Ruby	0.3g	2.0	1.0	26.0
	2.0-45-1 NTN	TC	Ruby	0.5g	2.0	1.0	45.0
	2.0-61-1 NTN	TC	Ruby	0.7g	2.0	1.0	61.0
	2.0-81-1 NTN	TC	Ruby	1.0g	2.0	1.0	81.0
	2.0-101-1 NTN	TC	Ruby	1.3g	2.0	1.0	101.0
	3.0-38-2 NTN	TC	Ruby	2.0g	3.0	2.0	38.0
	4.0-27-2 NTN	TC	Ruby	1.3g	4.0	2.0	27.0
	4.0-45-2 NTN	TC	Ruby	2.1g	4.0	2.0	45.0
	4.0-62-2 NTN	TC	Ruby	2.9g	4.0	2.0	62.0
	4.0-82-2 NTN	TC	Ruby	3.9g	4.0	2.0	82.0
	4.0-102-2 NTN	TC	Ruby	4.9g	4.0	2.0	102.0
	5.0-27.5-2 NTN	TC	Ruby	1.4g	5.0	2.0	27.5
	5.0-42.5-2 NTN	TC	Ruby	2.3g	5.0	2.0	45.0
	5.0-45-3 NTN	TC	Ruby	6.0g	5.0	3.0	45.0
	5.0-62.5-2 NTN	TC	Ruby	3.1g	5.0	2.0	62.5
	5.0-82.5-2 NTN	TC	Ruby	4.0g	5.0	2.0	82.5
	5.0-102.5-2 NTN	TC	Ruby	5.0g	5.0	2.0	102.5
	6.0-28-2 NTN	TC	Ruby	1.6g	6.0	2.0	28.0
	6.0-43-2 NTN	TC	Ruby	2.2g	6.0	2.0	43.0
	6.0-63-2 NTN	TC	Ruby	3.2g	6.0	2.0	63.0
	6.0-73-3 NTN	TC	Ruby	7.5g	6.0	3.0	73.0
	6.0-83-2 NTN	TC	Ruby	4.2g	6.0	2.0	83.0
	6.0-103-2 NTN	TC	Ruby	4.9g	6.0	2.0	103.0
	6.0-103-3 NTN	TC	Ruby	10.5g	6.0	3.0	103.0
	8.0-29-2 NTN	TC	Ruby	2.0g	8.0	2.0	29.0
	8.0-44-3 NTN	TC	Ruby	6.5g	8.0	3.0	44.0
	8.0-64-2 NTN	TC	Ruby	3.6g	8.0	2.0	64.0
	8.0-73-3 NTN	TC	Ruby	7.5g	6.0	3.0	73.0
	8.0-84-2 NTN	TC	Ruby	4.5g	8.0	2.0	84.0
	8.0-103-3 NTN	TC	Ruby	10.5g	8.0	3.0	103.0



T-Styli (Type H)	Order No.	Shaft	Ball	wt	dk mm	ds mm	MD mm	L mm
T-Styli (Type H)	1.0-50-2 NTTH	TC	Ruby	3g	1.0	2.0	10.0	50.0
	1.0-100-2 NTTH	TC	Ruby	5g	1.0	2.0	10.0	100.0
	2.0-50-2 NTTH	TC	Ruby	3g	2.0	2.0	20.0	50.0
	2.0-100-2 NTTH	TC	Ruby	5g	2.0	2.0	20.0	100.0
	1.0-50-3 NTTH	TC	Ruby	6g	1.0	3.0	10.0	50.0
	1.0-100-3 NTTH	TC	Ruby	10g	1.0	3.0	10.0	100.0
	2.0-50-3 NTTH	TC	Ruby	6g	2.0	3.0	20.0	50.0
	2.0-100-3 NTTH	TC	Ruby	10g	2.0	3.0	20.0	100.0



TC = Tungsten Carbide

INDO SERVICES

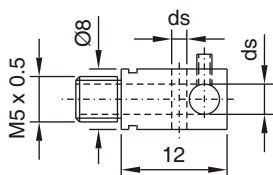
TEL : +91 80 23406723, +91 80 23377556, MOBILE : +91 94482 89260, +91 94482 89262, E-mail : info@indoservices.net

ADAPTORS FOR HEIGHT GAUGES

Adaptors for height gauges

Adaptors for styli (Type H)

Order No.	Material	wt	ds mm
1.0 NHH	Steel	4g	1.0
2.0 NHH	Steel	4g	2.0
3.0 NHH	Steel	3g	3.0

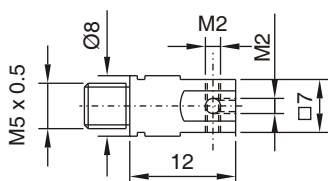


For use with **Styli (Type F)**, **(Type N)** and **T-Styli (Type H)** (Page 86).

Use only with **Shaft (Type A)** or **Shaft (Type B)** shown below.

Adaptors for styli (Type S)

Order No.	Material	wt
7.0 NHS	Steel	5g

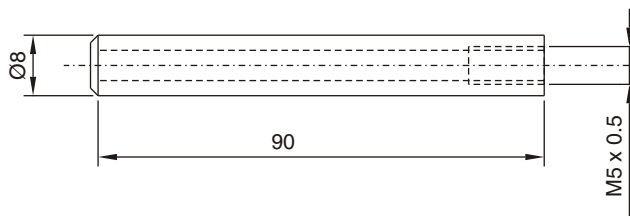


For use with **M2 thread Styli**.

Use only with **Shaft (Type A)** or **Shaft (Type B)** shown below.

Shaft (Type A)

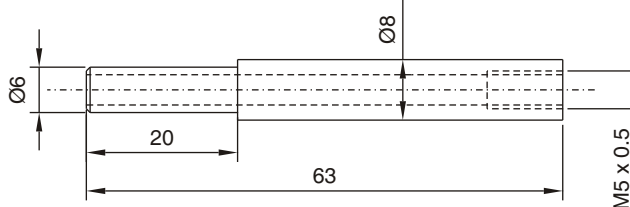
Order No.	Material	wt	Suitable for height gauge
8.0-90 NSA	Steel	24g	Trimos, Mitutoyo, Wenzel, Mahr,



Use only with **Adaptors for styli (Type H)** or **Adaptors for styli (Type S)** shown above.

Shaft (Type B)

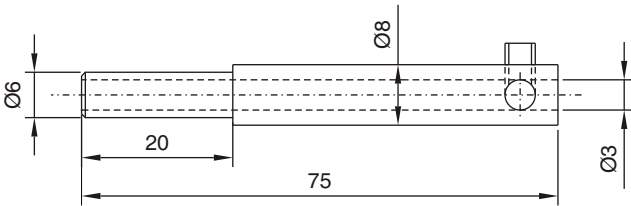
Order No.	Material	wt	Suitable for height gauge
6.0-63 NSB	Steel	19g	Tesa



Use only with **Adaptors for styli (Type H)** or **Adaptors for styli (Type S)** shown above.

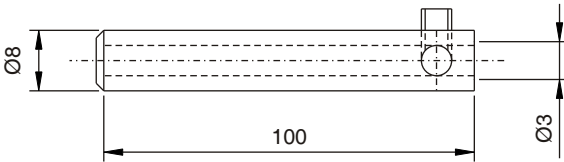
ADAPTORS FOR HEIGHT GAUGES

Adaptors for height gauges	Order No.	Material	wt	Suitable for height gauge
Adaptor for styli (Type C)	6.0-75 NHC	Steel	20g	Tesa



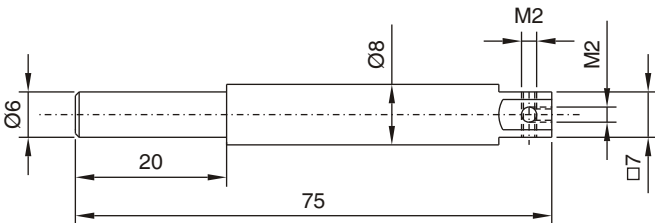
For use with **Styli (Type N), T-Styli (Type H)** with ds = 3mm (Page 86).

Adaptor for styli (Type D)	Order No.	Material	wt	Suitable for height gauge
	8.0-100 NHD	Steel	25g	Trimos, Mitutoyo, Wenzel, Mahr,



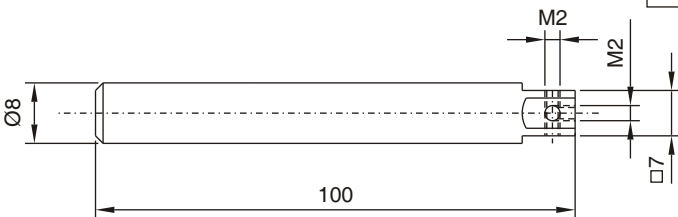
For use with **Styli (Type N), T-Styli (Type H)** with ds = 3mm (Page 86).

Adaptor for styli (Type E)	Order No.	Material	wt	Suitable for height gauge
	6.0-75 NHE	Steel	20g	Tesa



For use with **M2 thread Styli**.

Adaptor for styli (Type F)	Order No.	Material	wt	Suitable for height gauge
	8.0-100 NHF	Steel	25g	Trimos, Mitutoyo, Wenzel, Mahr,



For use with **M2 thread Styli**.

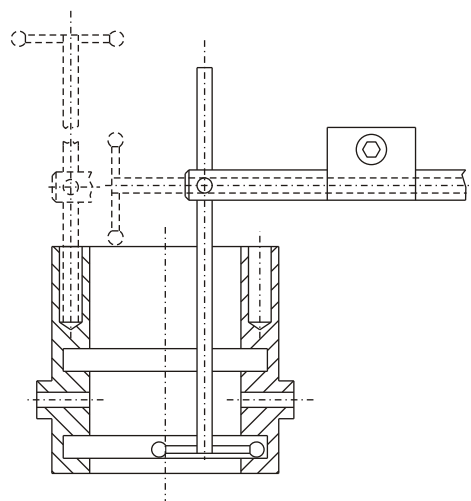
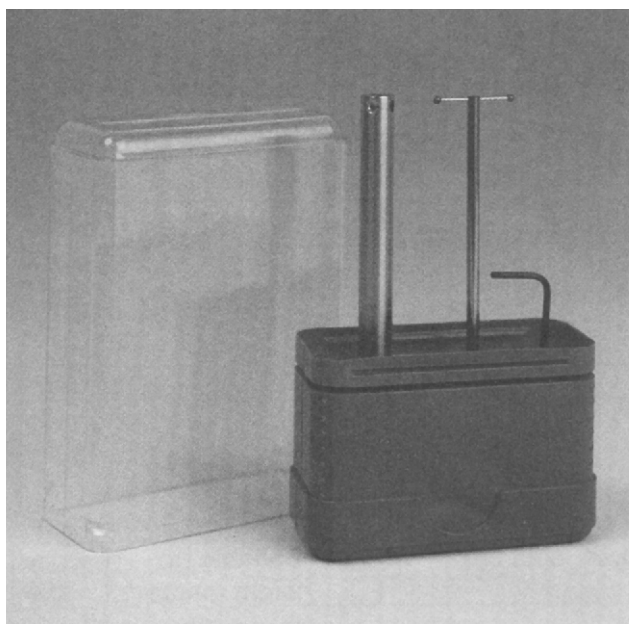
STYLUS SETS FOR HEIGHT GAUGES

Stylus sets for height gauges	Order No.	Suitable for height gauge	T-Stylus (Type H)
T- Stylus sets for height gauges	6.0 NHSC	Ø6mm	1.0-100-3 NTTH
	6.0 NHSD	Ø6mm	2.0-100-3 NTTH
	8.0 NHSE	Ø8mm	1.0-100-3 NTTH
	8.0 NHSF	Ø8mm	2.0-100-3 NTTH

Delivery in a sturdy plastic box.

The new **T-Stylus** design permits precise and efficient measuring in vertical and horizontal positions of grooves, recesses, shoulders, cross holes, etc.

Supplied equipment:	Draw.:
1 Pc T-Stylus (Type H) of your choice	Page 86
1 Pc Adaptor for styli (Type C) or (Type D)	Page 88
1 Pc Hexagon key 1.5 NWSK	Page 87



STYLUS SETS FOR HEIGHT GAUGES

Stylus sets for height gauges	Order No.	Suitable for height gauge	Shaft
T- Stylus sets for height gauges	8.0 NHSA	Ø8mm	8.0-90 NSA (Type A)
	6.0 NHSB	Ø6mm	6.0-63 NSB (Type B)

Delivery in a wooden case.

The new **T-Stylus** design permits precise and efficient measuring in vertical and horizontal positions of grooves, recesses, shoulders, cross holes, etc.

Supplied equipment:			Draw.:
1 Pc	T-Stylus (Type H)	1.0-100-3 NTTH	Page 86
1 Pc	T-Stylus (Type H)	2.0-100-3 NTTH	Page 86
1 Pc	Stylus (Type N)	2.0-81-1 NTN	Page 86
1 Pc	Stylus (Type N)	4.0-82-2 NTN	Page 86
1 Pc	Stylus (Type N)	6.0-103-3 NTN	Page 86
1 Pc	Adaptor for styli (Type H)	1.0 NHH	Page 87
1 Pc	Adaptor for styli (Type H)	2.0 NHH	Page 87
1 Pc	Adaptor for styli (Type H)	3.0 NHH	Page 87
1 Pc	Adaptor for styli (Type S)	7.0 NHS	Page 87
1 Pc	Shaft (Type A oder Type B) of your choice		Page 87
1 Pc	Hexagon key	1.3 NWSK	Page 87
1 Pc	Spanner	6.5 NWGA	Page 87

